

# milwaukee *Cylinder*

Specials are Our Standard



## High Durability, High Quality, Engineered Solutions – For the Toughest Applications!



### AUTHORIZED DISTRIBUTOR

**JERRY WALLING**

Automation & Robotics Division Sales Manager

[jwalling@centrosolves.com](mailto:jwalling@centrosolves.com)

901-357-1261 | [CentroSolves.com](http://CentroSolves.com)



- ▶ Tie Rod Cylinders
- ▶ Imperial/NFPA & Metric/ISO
- ▶ Custom Cylinders
- ▶ Pumps/Power Units
- ▶ Intensifiers
- ▶ Industrial Manipulators

ISO Certified

SIL3 Certified \*

\* Offered on request.  
Not available on all series, mounts.

## We Build Confidence.



# Hydraulic Cylinders



## SERIES "H"

Heavy Duty Hydraulic Cylinders

- Steel construction
- 3000 psi hydraulic service
- 5000 psi non-shock service
- Standard NFPA mounting styles
- 1.5" – 18" bores cataloged
- Larger bores available



## SERIES "LH"

Medium Duty Hydraulic Cylinders

- Steel construction
- 750 – 1500 psi hydraulic service
- Standard NFPA mounting styles
- 1.5" – 6" bores cataloged
- Larger bores available



## SERIES "MH"

ISO Metric Hydraulic Cylinders

- Steel construction
- 210 bar hydraulic service
- Standard ISO mounting styles
- 25 mm – 200 mm bores cataloged
- Larger bores available



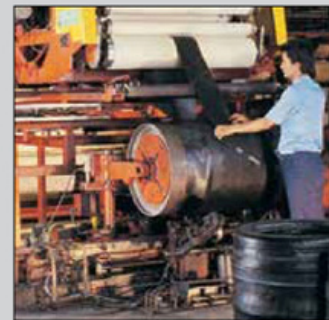
### PRESS CYLINDER APPLICATIONS

From garbage compactors to cotton bailers – whatever the application, major press manufacturers rely on *Milwaukee Cylinder's* extensive experience.



### OIL AND GAS INDUSTRY

From 10,000 feet beneath the gulf, to the harshest environments of the tar sands, *Milwaukee Cylinder* products are used in the most demanding projects.



### PLASTIC MOLDING AND RUBBER INDUSTRY

From garden furniture, to where the rubber hits the road, *Milwaukee Cylinder* is part of the process.



## **SERIES "A"**

Heavy Duty Pneumatic Cylinders

- Steel construction
- 250 psi air service
- Standard NFPA mounting styles
- 1.5" – 16" bores cataloged
- Larger bores available
- Non-lube versions available



## **SERIES "MN"**

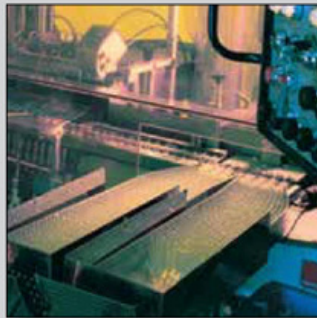
Pneumatic/Hydraulic Cylinders – Aluminum

- Aluminum construction
- 250 psi air service/400 psi hydraulic
- Standard NFPA mounting styles
- 1.5" – 8" bores



### **AUTOMOTIVE APPLICATIONS**

Stamping, welding, clamping, or hydroforming, *Milwaukee Cylinder* keeps the production lines running.



### **MOTION CONTROL APPLICATIONS**

For the most sophisticated, yet rugged needs in motion control, you can rely on *Milwaukee Cylinder*.



### **FOUNDRIES AND STEEL MILLS**

Casting, rolling, or pickling... whatever the demanding application – *Milwaukee Cylinder* products are on the job.

**SMART CYLINDERS**

## Position Sensing and Motion Control

Available for H, LH, A Series and Custom Cylinders

- Bores 1.5" and larger
- 1" rod diameter and larger
- Low friction seals available

- Strokes to 16 feet
- Linear transducer with analog and digital outputs
- We will meet virtually any of your application requirements



## Proximity Switches

Available for H, LH, A Series and Custom Cylinders

- 1.5" - 4" bores are standard product
- Larger bores available

- Non-contact switches detect the presence of the spud/cushion bushing
- AC/DC inductive switches



## RFID Tags: Simplify Maintenance

Available for all Cylinders

- All needed information about the cylinder is stored electronically on the tag -never worry about finding identification information
- In addition, tags contain a read-write maintenance log

- Read/Write using ISO Standard 15693 near-field readers
- Durable in Industrial Environments - IP 67 rated



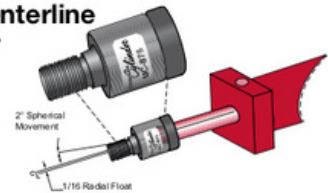
**SPECIAL CYLINDER ACCESSORIES**

## Eliminate Alignment Problems. Install a Linear Alignment Coupler

Features:

- Reduces rod seal and bearing wear
- Prevents binding and erratic movement caused by misalignment

- Permits a greater tolerance between cylinder centerline and mating member
- Works equally well in "push" and "pull" applications



## AMLOK® Type RCH Rod Clamp

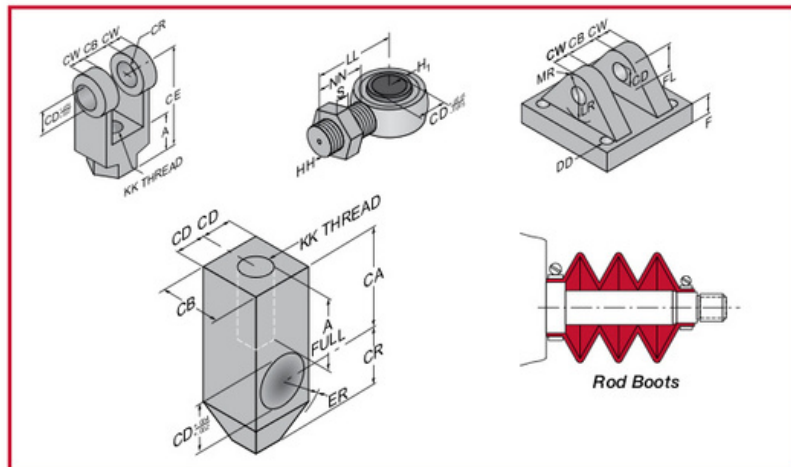
- Provides power-off clamping of rods and shafts
- Clamps are actuated by a spring/collet mechanism and unclamped by hydraulic pressure

- Designed to clamp components after the motion has stopped and to hold the position securely as long as the forces do not exceed the table values



**STANDARD CYLINDER ACCESSORIES**

- Rod End Styles
- Rod Clevis
- Rod Eye
- Clevis Mounting
- Trunnion Mounts
- Rod Boots
- And More!

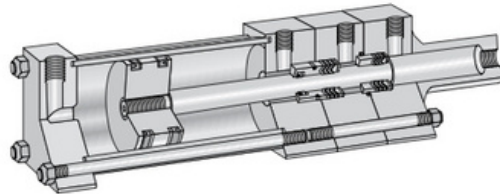


**Milwaukee Cylinder** offers additional products to help complete your system needs. **Pressure Boosters** are ideal for limited operation applications requiring intermittent high pressure when you only have low-pressure air. **Air Oil Tanks** supplement a booster system by providing a source of low pressure oil, while also providing an outlet for entrapped air. **Accumulators** can improve overall system efficiency.

## Pressure Boosters

Available in Single Pressure and Dual Pressure Models

- Testing
- Fluid Transfer
- High Pressure from Shop Air
- Liquid Injection
- Holding Pressure



## Air Oil Tanks

Available in Single Pressure and Dual Pressure Models

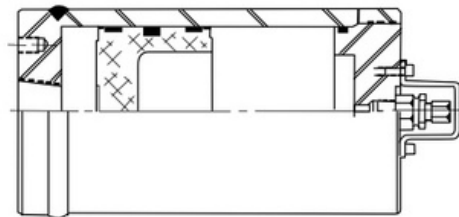
- Compensate for any oil loss in a hydraulic system
- Source of low pressure hydraulics which can be used for cylinder return movement
- Outlet for trapped air



## NA Series Piston Type Accumulators

Available in Single Pressure and Dual Pressure Models

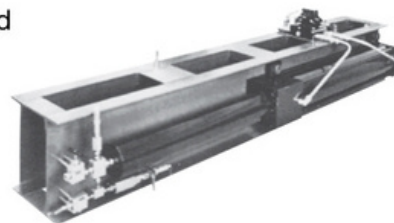
- Simplify circuit design
- Lower HP requirements
- Improve operation/ Increased Cycle operation



## Manufacturing Processes

Milwaukee Cylinder **Pressure Boosters** and **Air Oil Tanks** solutions offer smoother power and space savings compared to pneumatic only systems, and cost savings compared to pump based hydraulic systems.

**Call us for Application Assistance.**



## \* GEAR PUMPS

Maximum Pressure:

**3000 psi**

Flow Rates:

**.545-10.00 gpm**

Reservoir Capacities:

**10-30 gallons**

Standard Motor:

**TEFC 1725 rpm**

## \* VANE PUMPS

Maximum Pressure:

**2000 psi**

Flow Rates:

**4-8 gpm**

Reservoir Capacities:

**20 gallons**

Standard Motor:

**TEFC 1725 rpm**

\* Custom Designs Available!

**Milwaukee Cylinder Power Units** are powerful performers for your general hydraulic power unit needs. Available in either Gear Pump (3000 psi) or Vane Pump (2000 psi) designs, these units really deliver with standard features and options needed to do the job right. These units are fully featured to give you the performance and value that you need. Available options and directional valves help you to customize the power unit for your application.



Contact **Milwaukee Cylinder** for a quote on the power unit configuration that meets your application.



**Vertical**



**NFPA/JIC Style**



**Low Profile**



**L-Shaped**

## Pow'r Arm™

Safe, convenient positioning of loads up to 2,000 lbs.

- Larger capacities available as specials
- Quick, easy lifting and positioning of heavy dies, tooling and parts
- One-person control
- Dual speed control
- Integrated hydraulic controls
- Modifications on request



## Pow'r Reach™

For fast, easy lifting and precise positioning of tombstones, vises and materials.

- Up to 750 pound capacity
- 58-inch vertical travel, 8.5 foot reach and 350 degree rotation
- One-person control
- Dual speed control
- Integrated hydraulic controls
- Modifications on request



### POW'R ARM

Large shear blades are used to cut steel bars and billets. When these blades become worn the Pow'r Arm™ performs speedy removal and replacement of the blades safely with minimal disruption to the process.



### POW'R REACH

Parts are selected from pallets and moved to working stations. The smooth, positive hydraulic control of the Pow'r Reach™ permits picking and positioning of expensive parts safely and precisely.



5877 S Pennsylvania Avenue  
Cudahy, Wisconsin 53110-2456 USA



**MILWAUKEE CYLINDER offers:**

- SPECIALS / CUSTOM PRODUCTS
- HYDRAULIC CYLINDERS
- LOW PRESSURE HYDRAULIC CYLINDERS
- PNEUMATIC CYLINDERS
- ALUMINUM CYLINDERS
- HYDRAULIC PNEUMATIC DEVICES
  - PRESSURE BOOSTERS
  - AIR OIL TANKS
  - ACCUMULATORS
- CYLINDER ACCESSORIES
  - LINEAR ALIGNMENT TOOLS
  - AMLOK® ROD CLAMP
  - SPHERICAL ROD ACCESSORIES
- INDUSTRIAL MANIPULATORS
- POWER UNITS AND VALVES

Contact Milwaukee Cylinder for your application needs.

Specials  
are  
Our  
Standard

Your *Milwaukee Cylinder* Distributor



**JERRY WALLING**  
Automation & Robotics Division Sales Manager  
[jwalling@centrosolves.com](mailto:jwalling@centrosolves.com)  
901-357-1261 | [CentroSolves.com](http://CentroSolves.com)

[www.milwaukeeecylinder.com](http://www.milwaukeeecylinder.com) • [sales@milwaukeeecylinder.com](mailto:sales@milwaukeeecylinder.com)  
phone 414.769.9700 • fax 414.769.0157



Due to manufacturing processes and product improvements, please check website for the latest updates of products.

© 2017 Milwaukee Cylinder

1005\_05-030001615







**OUR MISSION IS TO BE REGARDED BY OUR CUSTOMERS AND COMMUNITY AS THE  
BEST SUPPLIER OF AUTOMATION AND CONTROL PRODUCT SOLUTIONS TO INDUSTRY**

## **CORPORATE OFFICE AND DISTRIBUTION CENTER**

---

3315 Overton Crossing  
Memphis, TN 38127-6545  
901-357-1261 | Fax 901-357-1379

## **CENTRO BRANCHES**

---

### ***FORMERLY MACHINE AUTOMATION***

320 Nancy Lynn Lane, Suite 7  
Knoxville, TN 37919  
865-588-7473 | Fax 865-588-8861

6800 Bert Kouns Industrial Loop  
Shreveport, LA 71129-4703  
318-221-2347 | Fax 318-227-1927

321 Hill Avenue  
Nashville, TN 37210-3550  
615-255-2220 | Fax 615-255-2212

3794 Abigail Drive  
Theodore, AL 36582-5268  
251-626-0100 | Fax 251-626-0310

### ***FORMERLY ADVANCED INDUSTRY SOLUTIONS***

6400 Shelby View Drive, Suite 110  
Memphis, TN 38134  
901-383-9744 | 800-477-9292 | Fax 901-383-8369

7600 Hardin Drive  
Little Rock, AR 72117-1603  
501-835-2193 | Fax 501-835-2277

102 Ashley Lane  
El Dorado, AR 71730-8373  
870-881-8383 | Fax 870-881-8400

2423 1st Avenue South  
Irondale, AL 35210-1539  
205-703-9810 | Fax 205-703-9811