



# Pro-face

2018 Catalog 

by Schneider Electric



# HMI and Industrial PC Solutions

Contact Information.....	4
Custom Overlays .....	5

## SOFTWARE

GP-Pro Ex .....	6
Pro-Server Ex.....	7
Remote HMI .....	8
BLUE Open Studio .....	9
BLUE.....	10

## HMI

### Standard

GP4000 Standard .....	11-19
GP4000 Rear Mount.....	20-24
GP4000 Modular.....	25-27
GP4100 Compact.....	28-30

### Hand Held

GP4000H Graphical Pendant Station .....	31-32
---	-------

### Control

LT4000M.....	33-36
LT3000 .....	37-38
AGP3000 w/ CANopen.....	39-43
AGP3000 w/ FlexNetwork .....	44-48
AGP3000 w/ Discrete I/O .....	49-53

### EZ Series

Fingerprint Recognition .....	55
Illuminated Switch.....	56
Numpad .....	57
Tower Light.....	58

## ENHANCED HMI

### SP5000

Premium Display .....	60
Advanced Display.....	61
Open Box.....	62
Power Box.....	63
Multi-Converter Box.....	64

## IPC

### Node Box

PE4000B .....	77-79
---------------	-------

### Panel PC

RC6000 .....	80
PS5000 .....	81-85
PS4000 .....	86-97

### Flat Panel Display

FP5000 .....	88-89
--------------	-------

## ACCESSORIES

### HMI

Accessories.....	65-72
Replacement Parts .....	73-76

### EZ Series

Accessories.....	72
Replacement Parts .....	76

### IPC

Accessories.....	90-94
------------------	-------

## Contact Information

---



### Customer Service & Tech Support

Pro-face is committed to delivering excellent technical support whether you are local or abroad—free, real time solutions. Our technical support website is a vast resource of product and application knowledge designed to help you maximize the value of your Pro-face HMI with services aimed at reducing development man-hours by offering FAQ, Driver Downloads, Manual Downloads, Application Notes, and much more.

#### Customer Service / Inside Sales

**Phone:** 800-289-9266 (option 1)

**Leadtime:** [leadtime@profaceamerica.com](mailto:leadtime@profaceamerica.com)

**Customer Care:** [customercare@profaceamerica.com](mailto:customercare@profaceamerica.com)

#### Application Technical Support

**Phone:** 800-289-9266 (option 2)

**Support:** [support@profaceamerica.com](mailto:support@profaceamerica.com)



### Repair Services

Pro-face has eliminated loss throughout the entire process by providing free quotes for repair and return delivery. We are constantly re-evaluating our systems to ensure satisfaction for all of our customers. Should your HMI or iPC need repair or refurbishment, Pro-face America has the fastest turn around repair service in the industry with an average of just five days.

**Phone:** 734-477-0613

**Repair (RMA):** [masupport@profaceamerica.com](mailto:masupport@profaceamerica.com)



### Customization

Pro-face America has a Product Modification Department that is unequalled in the industry. We can tailor our products to meet the individual needs of your organization. Whether it's custom overlays, pre-loaded software, non-standard hardware, custom recovery media and/or kitting/bundling options for your HMI or iPC, we do it all in our state-of-the-art facility in Ann Arbor, Michigan.

**Website:** [profaceamerica.com/prodmod](http://profaceamerica.com/prodmod)

**Product Modifications:** [prodmod@profaceamerica.com](mailto:prodmod@profaceamerica.com)



### General Contact Information

#### Pro-face America

1050 Highland Drive, Suite D

Ann Arbor, MI 48108

[profaceamerica.com](http://profaceamerica.com)

**Phone:** 734-477-0600

**Phone:** 800-289-9266 (toll free)

**Fax:** 734-864-7347

**Web:** [webmaster@profaceamerica.com](mailto:webmaster@profaceamerica.com)

**Marketing:** [marcom@profaceamerica.com](mailto:marcom@profaceamerica.com)

**Media Relations:** [marcom@profaceamerica.com](mailto:marcom@profaceamerica.com)

**Accounting:** [accounting@profaceamerica.com](mailto:accounting@profaceamerica.com)

**HMI Store:** [customercare@profaceamerica.com](mailto:customercare@profaceamerica.com)

# CUSTOM OVERLAYS

[HMloverlays.com](http://HMloverlays.com)

- ✓ Rapid Delivery
- ✓ Quantity Based Pricing
- ✓ No Minimum Quantities
- ✓ Easy & Quick Process

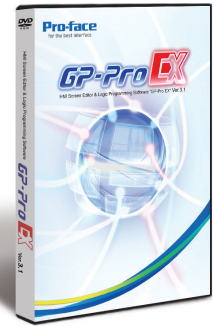


Would you like to highlight your brand and differentiate your machine through a custom HMI overlay? You can now purchase custom overlays for your Pro-face HMIs.

HMI Screen Editor &amp; Logic Programming Software

**GP-Pro EX**+

## Create Your HMI Application in Minutes



GP-Pro EX is the easy-to-use development software for Pro-face HMI and IPC units. With a wide array of application development tools, expanded diagnostic features and simulation capabilities, GP-Pro EX is capable of handling the most demanding HMI applications.

### Set up communications

- Choose and set up PLC and third-party devices effortlessly
- System settings are logically arranged and easy to find

### Design application/screens

- Drag-and-drop addressing, parts and colors
- Efficient features to reduce development time
- Create consistent look and feel using the user-defined templates

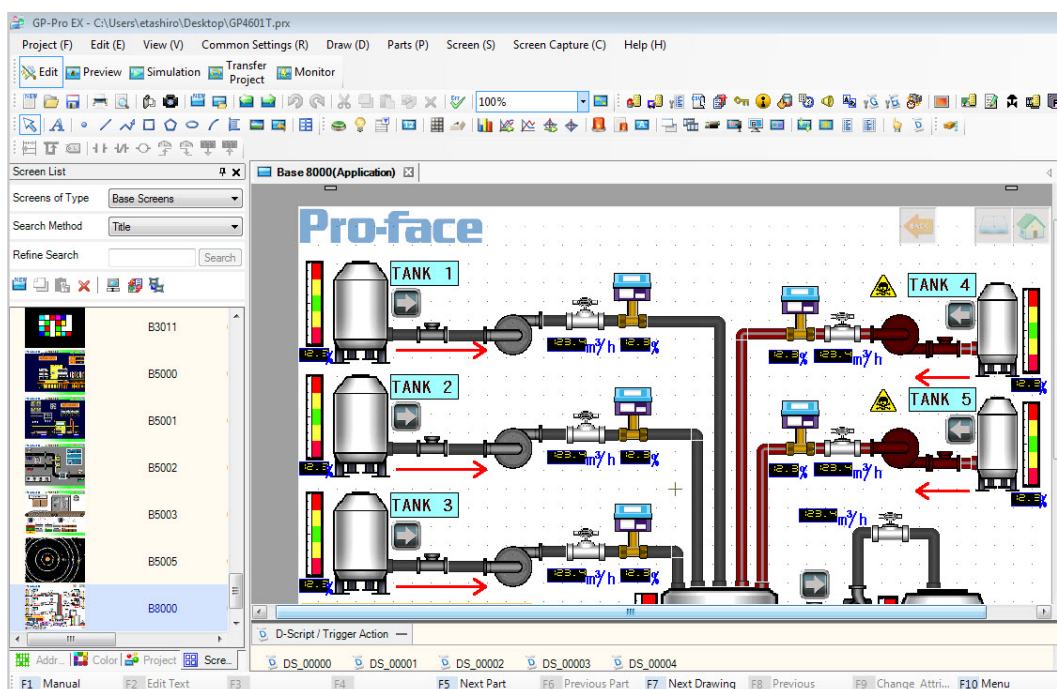
### Simulate and test

- Verify before you travel
- Debug your application without hardware
- Test without downloading

### Download/transfer

- Tamper-proof HMI application – password-protected project source

*One development software for both dedicated and open windows-based operator interfaces.*



View over 40 GP-Pro EX technical videos on YouTube.

**GP-Pro EX Playlist**

Download the Pro-face Software Guide on iTunes or Google Play.



Data management software

# Pro-Server EX+


## Enterprise-wide data collecting, sharing, connectivity solution

- Applications
- Collect and Manage Data
- Connectivity Support


**Control Room****Plant Floor***Pro-face open- platform HMI*

**Application software for sharing user-defined factory-floor data throughout the corporate enterprise**

**+ GP-Viewer**

-  Monitor and Control Multiple Operator Interfaces from a Single Remote PC.

**+ Camera Viewer**

-  Record, Display and Playback Live Video of Industrial Operations on a Remote PC.

**+ Pass Through**

Programming and monitoring PLC via operator interface.

**+ Remote PC Access**

Harness the power of a PC from your dedicated HMI.

**+ Memory Loader**

Field maintenance and backup with data protection.


**+ Transfer Tool**

Easy machine maintenance and data log retrieval.


**+ WebServer**

View HMI information and alerts through a web browser.

**+ Remote HMI**

-  Monitor & control HMI screens from a smart phone or tablet (data input, send work instruction, etc.).

**+ WinGP**

-  Runtime software for GP-Pro EX created applications.

**+ FTP Server**

Upload and download data files to the operator interface over the internet.

# Pro-face Remote HMI +



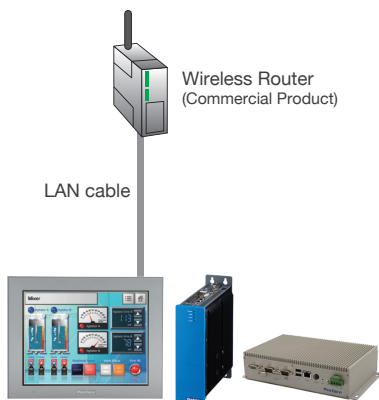
Pro-face Remote HMI allows you to check machines and equipment for alarms, operating status, and other information using a tablet or smartphone from anywhere on the factory floor.

## Quick steps to use Pro-face Remote HMI

### STEP1

#### Hardware Preparation

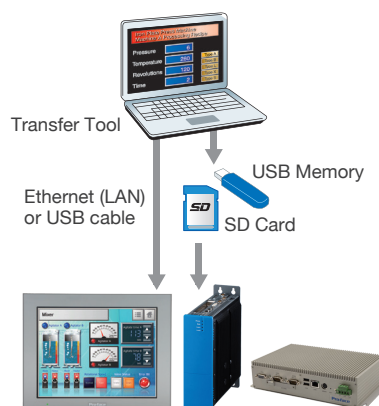
Prepare Wireless Router and connect to HMI.



### STEP2

#### Transfer Project File

Adjust application in GP-Pro EX and transfer it to HMI.



### STEP3

#### Install Remote HMI on a tablet or smartphone

Download and install Pro-face Remote HMI on a tablet or smartphone. Search HMI and connect to monitor the HMI screen.



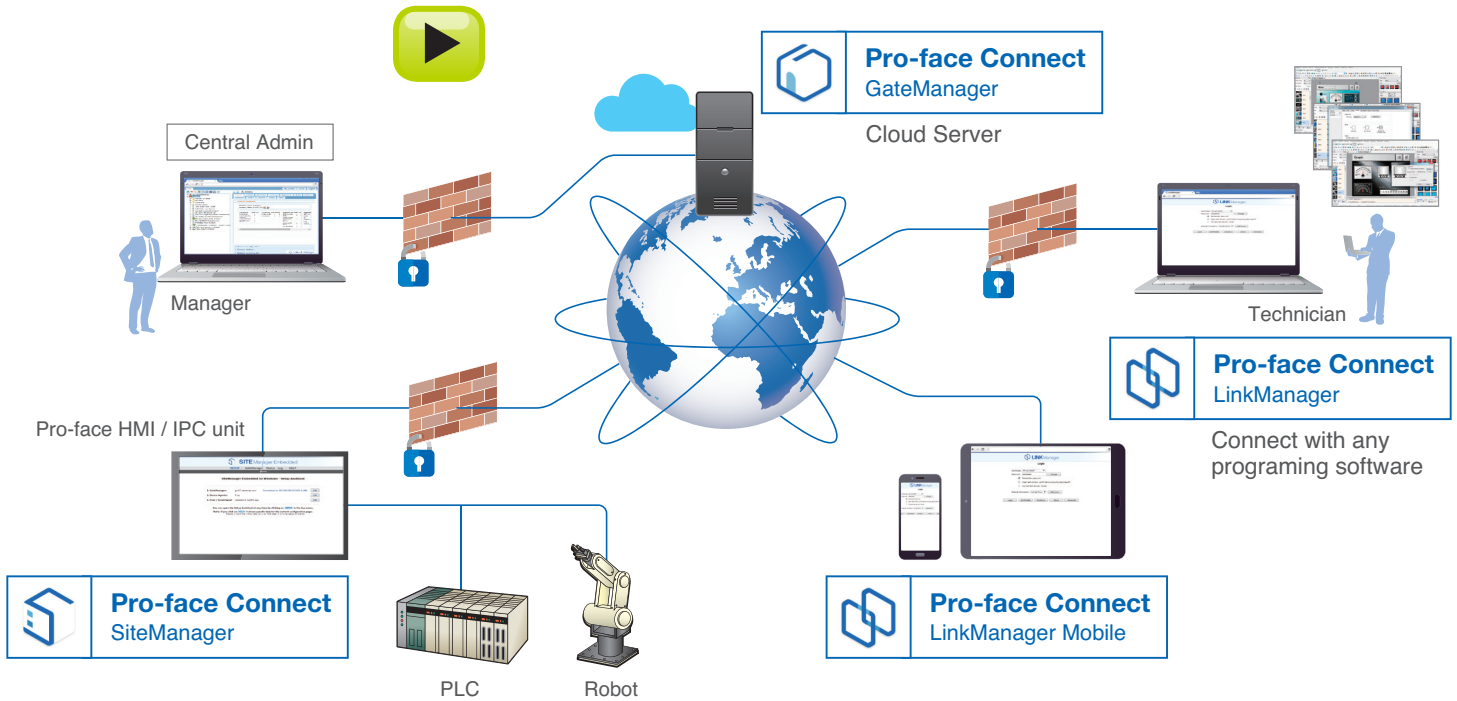
\*Remote HMI Server license is required separately to monitor IPC and PC.



# Pro-face Connect

## Secure Remote Access over Internet +

Pro-face Connect is a ready to use embedded HMI service to access machines remotely and securely.



Download a **FREE TRIAL**  
of Pro-face Connect today!

**DOWNLOAD**

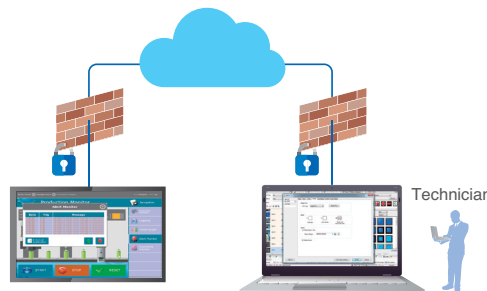
### Efficient and easy to use

- Remote access for programming, diagnostics, control, and monitoring
- Speeds up operations and reduces machine downtime



### Works everywhere, for everyone

- Operable for all application and segments
- Available from a desktop PC, laptop, or tablet



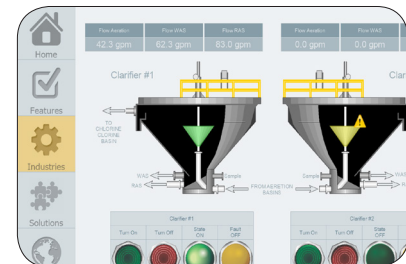
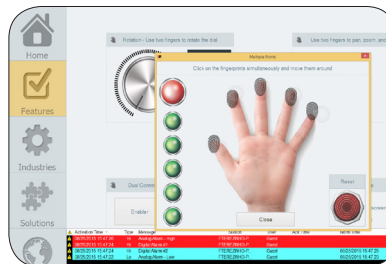
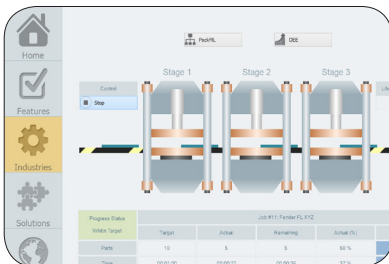
### Reliable and Safe

- Cybersecure (end to end) for both original equipment manufacturers and end users
- Secure access to remote devices over the internet



# BLUE Line Management Lite SCADA Open Studio

SCADA/HMI Software for Intuitive Dashboards, OEE, and the Internet of Things.



## + SP5000 and PS5000 Bundled

Available to be bundled with SP5000 HMIs and all Pro-face PS5000 Series Industrial PCs

## Support for Multiple Document Interface on Studio Mobile Access (SMA)

Access your graphical interface from any device, with groups of screens, popups, and dialogs

## OPC Redundancy

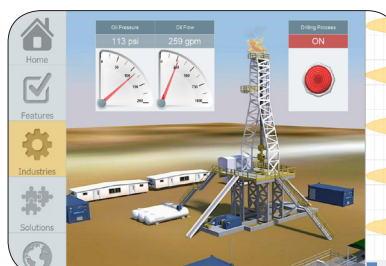
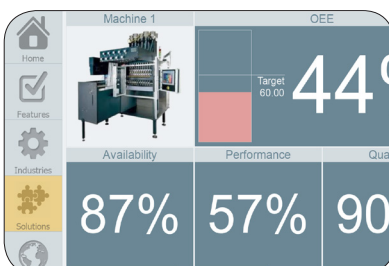
Native redundancy for OPC UA and OPC XML/DA interfaces

## Built-in Tag Integration with PLCs

Comprehensive tag integration with PLCs from Schneider and other manufacturers

## Library of Symbols

Expanded and improved set of symbols for HMI/SCADA applications



## COMING SOON

A revolutionary new HMI software will offer an alternative experience in HMI design.



Please check [profaceamerica.com](http://profaceamerica.com) for future announcements.

## GP4000 Standard



### Description

Best in Class Connectivity, Powerful HMI Functionality and Full Compatibility with legacy Pro-face GP-Pro EX and GP3000 products. GP4000 HMI drivers allow you to “talk to” your preferred PLC, vision system, motion controller, temperature controller, inverter, bar code reader, and actuator.

**Easy to Use:** Operators can easily monitor conditions and the operating environment in real time using realistic 3D buttons, lamps, and gauges.

**Saves Energy:** Reduces on-site power consumption in a variety of ways including an on-board LED backlight in all models, and a dimmer setting used to decrease and eventually stand-by the display after being idle for a set period of time.

**Quick On-site Recovery:** Simply touch the alarm message to check the relevant data in chronological sequence.

**Remote Monitoring:** GP-Viewer EX software provides various remote monitoring functions, such as checking the screen of the GP located on a production site from a remote office.

### Features

- 65,536 Colors, Clear, Bright, High-Resolution TFT Display
- Energy Efficient LED Display
- No Grid Analog Touch Panel for Improved Visibility and Precise Part Placement
- Supports Up to Two Protocol Drivers Simultaneously
- High Speed Application Transfer, 10 Times Faster than Conventional Operator Interfaces
- 10/100 Base-T Ethernet, USB, and Serial Communication Interfaces
- High-Definition Part Images and Multi-Language Support
- Custom Overlays available
- Remote HMI compatibility (tablet/phone)

# 3.5" Standard – GP4000

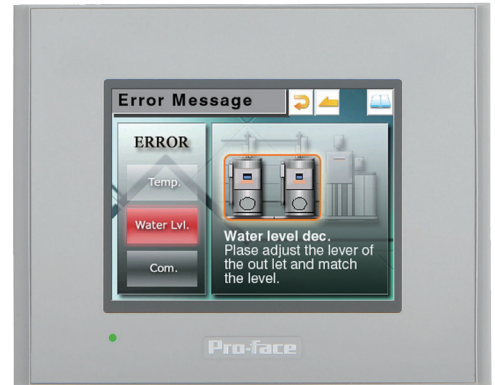
Analog Touchscreen Operator Interface  
with USB and Serial Communication Ports

## General Specifications

<b>Graphic Display Resolution</b>	320 x 240 pixels (QVGA)
<b>Display Type and Size</b>	TFT Color LCD (3.5")
<b>Display Colors</b>	65,536 Colors (no blink) / 16,384 Colors (blink)
<b>Display Area</b>	W 70.56 x H 52.92 mm [W 2.78 x H 2.08 in]
<b>Touch Screen</b>	Resistive Film (analog)
<b>Backlight</b>	White LED
<b>Storage Temperature</b>	-20 to 60° C [-4 to 140° F]
<b>Environmental Ratings</b>	IP65f, NEMA #250 Type 4x/13
<b>Certifications</b>	CCE, CSA, UL Listed C1D2, RoHS, ABS, DNV, ATEX

3D  
CAD

360



## Product Specifications

Part Number to Order	PFXGP4201TADW	PFXGP4201TAD	PFXGP4203TAD
<b>SD Card</b>	No	No	No
<b>Serial Ports (COM1)</b>	RS-232C	RS-232C / 422 / 485	RS-485 (isolation)
<b>Serial Ports (COM2)</b>	RS-422/485	n/a	n/a
<b>Ethernet</b>	n/a	x1	x1
<b>USB (1)</b>	Type-A (2.0)	Type-A (2.0)	Type-A (2.0)
<b>USB (2)</b>	Mini-B (2.0)	Mini-B (2.0)	Mini-B (2.0)
<b>Brightness / Contrast</b>	8 levels of adjustment	16 levels of adjustment	16 levels of adjustment
<b>Programming Memory</b>	8mb Flash EPROM	16mb Flash EPROM	16mb Flash EPROM
<b>Backup Memory</b>	128kb SRAM w/ battery backup	320kb SRAM w/ battery backup	320kb SRAM w/ battery backup
<b>Ambient Operating Temp</b>	0 to 50° C [ 32 to 122° F ]	0 to 50° C [ 32 to 122° F ]	0 to 50° C [ 32 to 122° F ]
<b>Input Voltage</b>	24 VDC	24 VDC	24 VDC
<b>Power Consumption</b>	9.6 W or less	9.6 W or less	9.6 W or less

## 5.7" Standard – GP4000

Analog Touchscreen Operator Interface  
with USB and Serial Communication Ports

## General Specifications

<b>Graphic Display Resolution</b>	320 x 240 pixels (QVGA)
<b>Display Type and Size</b>	TFT Color LCD (5.7")
<b>Display Colors</b>	65,536 Colors (no blink) / 16, 384 Colors (blink)
<b>Display Area</b>	W 115.2 x H 86.4 mm [W 4.54 x H 3.4 in]
<b>Touch Screen</b>	Resistive Film (analog)
<b>Backlight</b>	White LED
<b>Storage Temperature</b>	-20 to 60° C [-4 to 140° F]
<b>Environmental Ratings</b>	IP65f, NEMA #250 Type 4x/13
<b>Certifications</b>	CE, CSA, UL Listed C1D2, RoHS, ABS, DNV, ATEX

3D  
CAD

360



## Product Specifications

Part Number to Order	PFXGP4301TADW PFXGP4301TADWC*	PFXGP4301TAD PFXGP4301TADC*	PFXGP4303TAD
<b>SD Card</b>	No	x1	x1
<b>Serial Ports (COM1)</b>	RS-232C	RS-232C	RS-232C
<b>Serial Ports (COM2)</b>	RS-422 / 485	RS-422 / 485	RS-485 (isolation)
<b>Ethernet</b>	x1	x1	x1
<b>USB (1)</b>	Type-A (2.0)	Type-A (2.0)	Type-A (2.0)
<b>USB (2)</b>	Mini-B (2.0)	Mini-B (2.0)	Mini-B (2.0)
<b>Brightness / Contrast</b>	8 levels of adjustment	16 levels of adjustment	16 levels of adjustment
<b>Programming Memory</b>	8mb Flash EPROM	16mb Flash EPROM	16mb Flash EPROM
<b>Backup Memory</b>	128kb SRAM w/ battery backup	320kb SRAM w/ battery backup	320kb SRAM w/ battery backup
<b>Ambient Operating Temp</b>	0-50° C [ 32 to 122° F ]	0-55° C [ 32 to 131° F ]	0-55° C [ 32 to 131° F ]
<b>Input Voltage</b>	24 VDC	24 VDC	24 VDC
<b>Power Consumption</b>	10.5 W or less	10.5 W or less	10.5 W or less

\* C suffix denotes product is conformal coated

# 7.0" Standard (wide) – GP4000

Analog Touchscreen Operator Interface  
with USB and Serial Communication Ports

## General Specifications

<b>Graphic Display Resolution</b>	800 x 480 pixels (WVGA)
<b>Display Type and Size</b>	TFT Color LCD (7.0" Widescreen)
<b>Display Colors</b>	65,536 Colors (no blink) / 16, 384 Colors (blink)
<b>Display Area</b>	W 152.4 x H 91.44 mm [W 6.0 x H 3.6 in]
<b>Touchscreen</b>	Resistive Film (analog)
<b>Backlight</b>	White LED
<b>Storage Temperature</b>	-20 to 60° C [-4 to 140° F]
<b>Environmental Ratings</b>	IP65f, NEMA #250 Type 4x/13
<b>Certifications</b>	CE, CSA, UL Listed C1D2, RoHS, ABS, DNV, ATEX



3D  
CAD

360



## Product Specifications

<b>Part Number to Order</b>	<b>PFXGP4401WADW</b>
<b>SD Card</b>	x1
<b>Serial Ports (COM1)</b>	RS-232C
<b>Serial Ports (COM2)</b>	RS-422 / 485
<b>Ethernet</b>	x1
<b>USB (1)</b>	Type-A (2.0)
<b>USB (2)</b>	Mini-B (2.0)
<b>Brightness / Contrast</b>	8 levels of adjustment
<b>Programming Memory</b>	16mb Flash EPROM
<b>Backup Memory</b>	128kb SRAM with battery backup
<b>Ambient Operating Temp</b>	0-50° C [ 32 to 122° F ]
<b>Input Voltage</b>	24 VDC
<b>Power Consumption</b>	12W or less

## 7.5" Standard – GP4000

Analog Touchscreen Operator Interface  
with USB and Serial Communication Ports

### General Specifications

<b>Graphic Display Resolution</b>	640 x 480 pixels (VGA)
<b>Display Type and Size</b>	TFT Color LCD (7.5")
<b>Display Colors</b>	65,536 Colors (no blink) / 16, 384 Colors (blink)
<b>Display Area</b>	W 153.7 x H 115.8 mm [W 6.05 x H 4.56 in]
<b>Touchscreen</b>	Resistive Film (analog)
<b>Backlight</b>	White LED
<b>Storage Temperature</b>	-20 to 60° C [-4 to 140° F]
<b>Environmental Ratings</b>	IP65f, NEMA Type 4x/13
<b>Certifications</b>	CE, CSA, UL Listed C1D2, RoHS, ABS, DNV, ATEX



3D  
CAD

360



### Product Specifications

<b>Part Number to Order</b>	<b>PFXGP4401TAD</b>
<b>SD Card</b>	x1
<b>Serial Ports (COM1)</b>	RS-232C
<b>Serial Ports (COM2)</b>	RS-422 / 485
<b>Ethernet</b>	x1
<b>USB (1)</b>	Type-A (2.0)
<b>USB (2)</b>	Mini-B (2.0)
<b>Brightness / Contrast</b>	16 levels of adjustment
<b>Programming Memory</b>	32mb Flash EPROM
<b>Backup Memory</b>	320kb SRAM with battery backup
<b>Ambient Operating Temp</b>	0-55° C [ 32 to 131° F ]
<b>Input Voltage</b>	24 VDC
<b>Power Consumption</b>	12W or less



# 10.4" Standard – GP4000

Analog Touchscreen Operator Interface with USB and Serial Communication Ports

## General Specifications

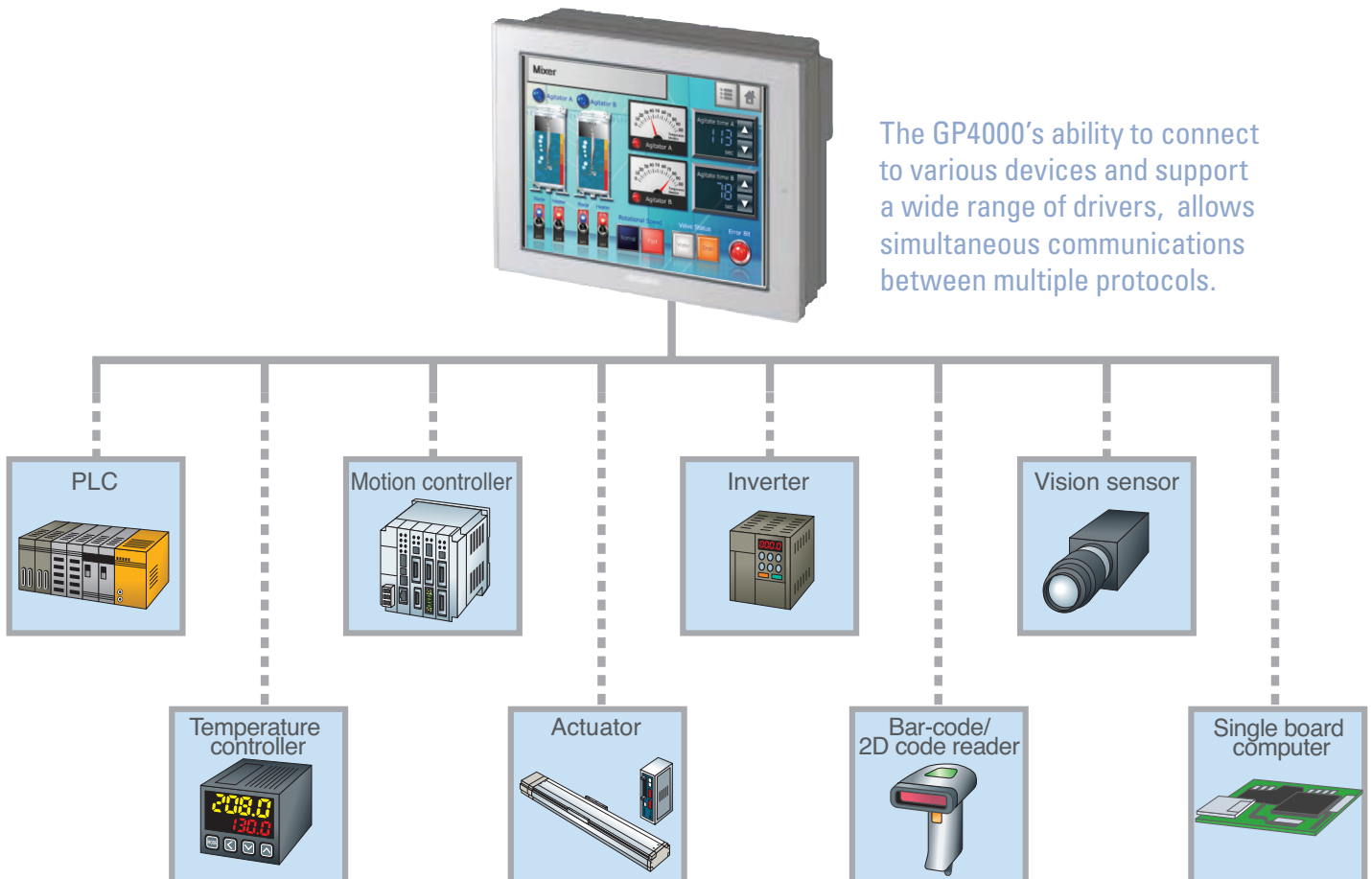
<b>Graphic Display Resolution</b>	640 x 480 pixels (VGA)
<b>Display Type and Size</b>	TFT Color LCD (10.4")
<b>Display Colors</b>	65,536 Colors (No blink) / 16, 384 Colors (blink)
<b>Display Area</b>	W 211.2 x H 158.4 mm [W 8.31 x H 6.24 in]
<b>Backlight</b>	White LED
<b>Storage Temperature</b>	-20 to 60° C [-4 to 140°F]
<b>Environmental Ratings</b>	IP65f, NEMA #250 Type 4x/13
<b>Certifications</b>	CE, CSA, UL Listed C1D2, RoHS, ABS, DNV, ATEX

**3D  
CAD**

**360**



The GP4000's ability to connect to various devices and support a wide range of drivers, allows simultaneous communications between multiple protocols.



## 10.4" Standard – GP4000

Analog Touchscreen Operator Interface  
with USB and Serial Communication Ports

## Product Specifications

Part Number to Order	PFXGP4501TAA PFXGP4501TAAC*	PFXGP4501TAD PFXGP4501TADC*	PFXGP4501TMD
SD Card	x1	x1	x1
Serial Ports (COM1)	RS-232C	RS-232C	RS-232C
Serial Ports (COM2)	RS-422 / 485	RS-422 / 485	RS-422 / 485
Ethernet	x1	x1	x1
USB (1)	Type-A (2.0)	Type-A (2.0)	Type-A (2.0)
USB (2)	Mini-B (2.0)	Mini-B (2.0)	Mini-B (2.0)
Touch Screen	Resistive Film (analog)	Resistive Film (analog)	Resistive Film (matrix)
Brightness / Contrast	16 levels of adjustment	16 levels of adjustment	16 levels of adjustment
Programming Memory	32mb Flash EPROM	32mb Flash EPROM	32mb Flash EPROM
Backup Memory	320kb SRAM w/ battery backup	320kb SRAM w/ battery backup	320kb SRAM w/ battery backup
Input Voltage	100-240 VAC	24 VDC	24 VDC
Ambient Operating Temp	0-55° C [ 32 to 131° F ]	0-55° C [ 32 to 131° F ]	0-55° C [ 32 to 131° F ]
Power Consumption	100 Vac: <44VA 240 Vac: <58VA	17W or less	17W or less

\* C suffix denotes product is conformal coated

Part Number to Order	PFXGP4501TMA	PFXGP4501TADW	PFXGP4503TAD
SD Card	x1	x1	x1
Serial Ports (COM1)	RS-232C	RS-232C	RS-232C
Serial Ports (COM2)	RS-422 / 485	RS-422 / 485	RS-422 / 485 (isolation)
Ethernet	x1	x1	x1
USB (1)	Type-A (2.0)	Type-A (2.0)	Type-A (2.0)
USB (2)	Mini-B (2.0)	Mini-B (2.0)	Mini-B (2.0)
Touch Screen	Resistive Film (matrix)	Resistive Film (matrix)	Resistive Film (analog)
Brightness / Contrast Controls	16 levels of adjustment	8 levels of adjustment	16 levels of adjustment
Programming Memory	32mb Flash EPROM	16mb Flash EPROM	32mb Flash EPROM
Backup Memory	320kb SRAM w/ battery backup	128kb SRAM w/ battery backup	320kb SRAM w/ battery backup
Input Voltage	100-240 VAC	24 VDC	24 VDC
Ambient Operating Temperature	0-55° C [ 32 to 131° F ]	0-50° C [ 32 to 122° F ]	0-55° C [ 32 to 131° F ]
Power Consumption	100 Vac: <44VA 240 Vac: <58VA	17W or less	17W or less

# 12.1" Standard – GP4000

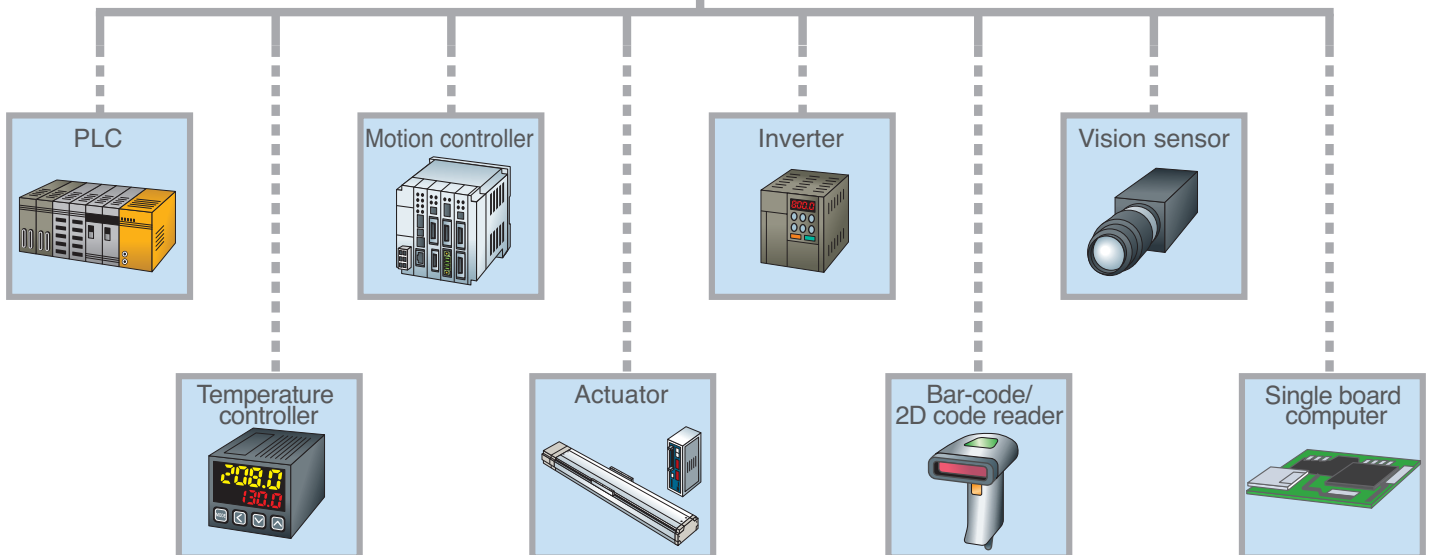
Analog Touchscreen Operator Interface with USB and Serial Communication Ports

## General Specifications

<b>Graphic Display Resolution</b>	800 x 600 pixels (SVGA)
<b>Display Type and Size</b>	TFT Color LCD (12.1")
<b>Display Colors</b>	65,536 Colors (no blink) / 16, 384 Colors (blink)
<b>Display Area</b>	W 246.0 x H 184.5 mm [W 9.69 x H 7.26 in]
<b>Backlight</b>	White LED
<b>Storage Temperature</b>	-20 to 60° C [-4 to 140° F]
<b>Environmental Ratings</b>	IP65f, NEMA #250 Type 4x/13
<b>Certifications</b>	CE, CSA, UL Listed C1D2, RoHS, ABS, DNV, ATEX



The GP4000's ability to connect to various devices and support a wide range of drivers, allows simultaneous communications between multiple protocols.



## 12.1" Standard – GP4000

Analog Touchscreen Operator Interface  
with USB and Serial Communication Ports

## Product Specifications

Part Number to Order	PFXGP4601TAA PFXGP4601TAAC*	PFXGP4601TAD PFXGP4601TADC*	PFXGP4603TAD
SD Card	x1	x1	x1
Serial Ports (COM1)	RS-232C	RS-232C	RS-232C
Serial Ports (COM2)	RS-422 / 485	RS-422 / 485	RS-485 (isolation)
Ethernet	x1	x1	x1
USB (1)	Type-A (2.0)	Type-A (2.0)	Type-A (2.0)
USB (2)	Mini-B (2.0)	Mini-B (2.0)	Mini-B (2.0)
Touch Screen	Resistive Film (analog)	Resistive Film (analog)	Resistive Film (analog)
Brightness / Contrast	16 levels of adjustment	16 levels of adjustment	16 levels of adjustment
Programming Memory	32mb Flash EPROM	32mb Flash EPROM	32mb Flash EPROM
Backup Memory	320kb SRAM w/ battery backup	320kb SRAM w/ battery backup	320kb SRAM w/ battery backup
Input Voltage	100-240 VAC	24 VDC	24 VDC
Ambient Operating Temp	0-55° C [ 32 to 131° F ]	0-55° C [ 32 to 131° F ]	0-55° C [ 32 to 131° F ]
Power Consumption	100 Vac: <44VA 240 Vac: <58VA	17W or less	17W or less

\* C suffix denotes product is conformal coated

Part Number to Order	PFXGP4601TMD	PFXGP4601TMA
SD Card	x1	x1
Serial Ports (COM1)	RS-232C	RS-232C
Serial Ports (COM2)	RS-422 / 485	RS-422 / 485
Ethernet	x1	x1
USB (1)	Type-A (2.0)	Type-A (2.0)
USB (2)	Mini-B (2.0)	Mini-B (2.0)
Touch Screen	Resistive Film (matrix)	Resistive Film (matrix)
Brightness / Contrast	16 levels of adjustment	16 levels of adjustment
Programming Memory	32mb Flash EPROM	32mb Flash EPROM
Backup Memory	320kb SRAM with battery backup	320kb SRAM with battery backup
Ambient Operating Temp	0-55° C [ 32 to 131° F ]	0-55° C [ 32 to 131° F ]
Input Voltage	24 VDC	100-240 VAC
Power Consumption	17W or less	100 Vac: <44VA 240 Vac: <58VA

## GP4000 Rear Mount



### Description

The GP4000 Series Rear-Mount model is an HMI that can be mounted from the rear of an equipment control panel. Conventional programmable displays are typically designed to be mounted from the front, and have a bezel that projects past the front of the equipment control panel.

By offering a rear-mount model that can be mounted from the rear of an equipment control panel to meet the increasing need for design-conscious equipment in the industrial world, Pro-face is now able to provide a mounting method that matches industry needs in terms of equipment appearance and overall control panel design.

Using a rear-mount model also makes it possible to keep the control panel and display area flat. This has the benefit of preventing the accumulation of dust and mold, and even allows the display to be used in medical equipment and other devices used in environments where hygiene is important.

### Features

- Equipment control panel and display area can be kept flat
- Available in four sizes: 12.1", 10.4", 7.5", and 5.7"
- Compliant with a variety of international standards
- Supports GP-Pro EX, screen editing and logic program software for the existing GP4000 series

## 5.7" Rear Mount – GP4000

Analog Touchscreen Operator Interface  
with Multiple Rear Mounting Options

### General Specifications

<b>Graphic Display Resolution</b>	320 x 240 pixels (QVGA)
<b>Display Type and Size</b>	TFT Color LCD (5.7")
<b>Display Colors</b>	65,536 Colors (no blink) / 16,384 Colors (blink)
<b>Display Area</b>	W 115.2 x H 86.4 mm (W 4.54 x H 3.4 in)
<b>Touch Screen</b>	Resistive Film (analog)
<b>Backlight</b>	White LED
<b>Storage Temperature</b>	-20 to 60° C [-4 to 140° F]
<b>Environmental Ratings</b>	IP20
<b>Certifications</b>	CE, CSA, UL Listed C1D2, RoHS, ABS, DNV, ATEX



### Product Specifications

Part Number to Order	PFXGP4301TADR	PFXGP4301TADRF0C*
<b>SD Card</b>	x1	x1
<b>Serial Ports (COM1)</b>	RS-232C	RS-232C
<b>Serial Ports (COM2)</b>	RS-422/485	RS-422/485
<b>Ethernet</b>	x1	x1
<b>USB (1)</b>	Type-A (2.0)	Type-A (2.0)
<b>USB (2)</b>	Mini-B (2.0)	Mini-B (2.0)
<b>Brightness / Contrast</b>	16 levels of adjustment	16 levels of adjustment
<b>Programming Memory</b>	16mb Flash EPROM	16mb Flash EPROM
<b>Backup Memory</b>	320kb SRAM w/ battery backup	320kb SRAM w/ battery backup
<b>Ambient Operating Temp</b>	0 to 55° C [ 32 to 131° F ]	0 to 55° C [ 32 to 131° F ]
<b>Input Voltage</b>	24 VDC	24 VDC
<b>Power Consumption</b>	10.5 W or less	10.5 W or less

\* Product is conformal coated

## 7.5" Rear Mount – GP4000

Analog Touchscreen Operator Interface  
with Multiple Rear Mounting Options

## General Specifications

<b>Graphic Display Resolution</b>	640 x 480 pixels (VGA)
<b>Display Type and Size</b>	TFT Color LC (7.5")
<b>Display Colors</b>	65,536 Colors (no blink) / 16,384 Colors (blink)
<b>Display Area</b>	W 153.7 x H 115.8 mm [W 6.05 x H 4.56 in]
<b>Touch Screen</b>	Resistive Film (analog)
<b>Backlight</b>	White LED
<b>Storage Temperature</b>	-20 to 60° C [-4 to 140° F]
<b>Environmental Ratings</b>	IP20
<b>Certifications</b>	CE, CSA, UL Listed C1D2, RoHS, ABS, DNV, ATEX



## Product Specifications

Part Number to Order	PFXGP4401TADR	PFXGP4401TADRFOC*
<b>SD Card</b>	x1	x1
<b>Serial Ports (COM1)</b>	RS-232C	RS-232C
<b>Serial Ports (COM2)</b>	RS-422/485	RS-422/485
<b>Ethernet</b>	x1	x1
<b>USB (1)</b>	Type-A (2.0)	Type-A (2.0)
<b>USB (2)</b>	Mini-B (2.0)	Mini-B (2.0)
<b>Brightness / Contrast</b>	16 levels of adjustment	16 levels of adjustment
<b>Programming Memory</b>	32mb Flash EPROM	32mb Flash EPROM
<b>Backup Memory</b>	320kb SRAM w/ battery backup	320kb SRAM w/ battery backup
<b>Ambient Operating Temp</b>	0 to 55° C [ 32 to 131° F ]	0 to 55° C [ 32 to 131° F ]
<b>Input Voltage</b>	24 VDC	24 VDC
<b>Power Consumption</b>	12 W or less	12 W or less

\* Product is conformal coated

# 10.4" Rear Mount – GP4000

Analog Touchscreen Operator Interface  
with Multiple Rear Mounting Options

## General Specifications

<b>Graphic Display Resolution</b>	640 x 480 pixels (VCA)
<b>Display Type and Size</b>	TFT Color LC (10.4")
<b>Display Colors</b>	65,536 Colors (no blink) / 16,384 Colors (blink)
<b>Display Area</b>	W 211.2 x H 158.4 mm [W 8.31 x H 6.24 in]
<b>Touch Screen</b>	Resistive Film (analog)
<b>Backlight</b>	White LED
<b>Storage Temperature</b>	-20 to 60° C [-4 to 140° F]
<b>Environmental Ratings</b>	IP20
<b>Certifications</b>	CE, CSA, UL Listed C1D2, RoHS, ABS, DNV, ATEX



## Product Specifications

Part Number to Order	PFXGP4501TADR	PFXGP4501TADRF0C*
<b>SD Card</b>	x1	x1
<b>Serial Ports (COM1)</b>	RS-232C	RS-232C
<b>Serial Ports (COM2)</b>	RS-422/485	RS-422/485
<b>Ethernet</b>	x1	x1
<b>USB (1)</b>	Type-A (2.0)	Type-A (2.0)
<b>USB (2)</b>	Mini-B (2.0)	Mini-B (2.0)
<b>Brightness / Contrast</b>	16 levels of adjustment	16 levels of adjustment
<b>Programming Memory</b>	32mb Flash EPROM	32mb Flash EPROM
<b>Backup Memory</b>	320kb SRAM w/ battery backup	320kb SRAM w/ battery backup
<b>Ambient Operating Temp</b>	0 to 55° C [ 32 to 131° F ]	0 to 55° C [ 32 to 131° F ]
<b>Input Voltage</b>	24 VDC	24 VDC
<b>Power Consumption</b>	17 W or less	17 W or less

\* Product is conformal coated



# 12.1" Rear Mount – GP4000

Analog Touchscreen Operator Interface  
with Multiple Rear Mounting Options

## General Specifications

<b>Graphic Display Resolution</b>	800 x 600 pixels (SVCA)
<b>Display Type and Size</b>	TFT Color LC (12.1")
<b>Display Colors</b>	65,536 Colors (no blink) / 16,384 Colors (blink)
<b>Display Area</b>	W 246.0 x H 184.5 mm [W 9.69 x H 7.26 in]
<b>Touch Screen</b>	Resistive Film (analog)
<b>Backlight</b>	White LED
<b>Storage Temperature</b>	-20 to 60° C [-4 to 140° F]
<b>Environmental Ratings</b>	IP20
<b>Certifications</b>	CE, CSA, UL Listed C1D2, RoHS, ABS, DNV, ATEX



## Product Specifications

Part Number to Order	PFXGP4601TADR	PFXGP4601TADR
<b>SD Card</b>	x1	x1
<b>Serial Ports (COM1)</b>	RS-232C	RS-232C
<b>Serial Ports (COM2)</b>	RS-422/485	RS-422/485
<b>Ethernet</b>	x1	x1
<b>USB (1)</b>	Type-A (2.0)	Type-A (2.0)
<b>USB (2)</b>	Mini-B (2.0)	Mini-B (2.0)
<b>Brightness / Contrast</b>	16 levels of adjustment	16 levels of adjustment
<b>Programming Memory</b>	32mb Flash EPROM	32mb Flash EPROM
<b>Backup Memory</b>	320kb SRAM w/ battery backup	320kb SRAM w/ battery backup
<b>Ambient Operating Temp</b>	0 to 55° C [ 32 to 131° F ]	0 to 55° C [ 32 to 131° F ]
<b>Input Voltage</b>	24 VDC	24 VDC
<b>Power Consumption</b>	17 W or less	17 W or less

\* Product is conformal coated

# GP4000VM



## Description

Introducing the GP4000VM series, a video unit compatible HMI. Like all Pro-face hardware, the Pro-face GP4000VM series offers extensive connectivity with a wide range of industrial controllers. This series includes the 12.1" PFXGP4621 and the 10.4" PFXGP4521 displays, both of which allow for a video unit to be mounted on the back with minimal effort.

Mount a Video unit or show analog camera images on a GP unit. Review information on the video unit module and RGB Input Unit.

Visualization on manufacturing floors has become increasingly important to manage product development and avoid potential line errors. Utilizing camera monitoring allows machine operators to view and track activity, and address any hazards quickly. To address the needs of these customers, Pro-face has expanded the GP4000 Series with a video unit compatible HMI.

## Features

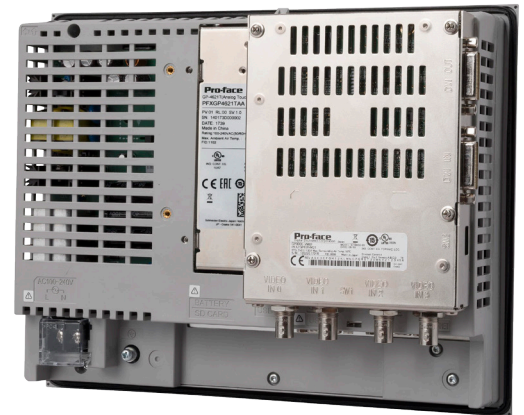
- VM Unit (GP3000-VM01)  
RGB Input Unit (GP3000-RGB201)
- Easily mounted on the back of unit
- Programmed easily with GP-Pro EX
- Compatible with Pro-face Remote HMI
- Compatible with EZ Series
- Camera images display any portion of machine or assembly line

## 10.4" GP4000VM

Analog Touchscreen Operator Interface  
with Video Unit Attachment Option

## General Specifications

<b>Graphic Display Resolution</b>	640 x 480 pixels (VCA)
<b>Display Type and Size</b>	TFT Color LCD (10.4")
<b>Display Colors</b>	65,536 Colors (No blink)/16,384 Colors (blink)
<b>Display Area</b>	W 211.2 x H 158.4 mm [W 8.31 x H 6.24 in]
<b>Touch Screen</b>	Resistive Film (analog)
<b>Backlight</b>	White LED
<b>Storage Temperature</b>	-20 to 60° C [-4 to 140° F]
<b>Environmental Ratings</b>	IP65f, NEMA Type 4x/13
<b>Certifications</b>	CE, CSA, UL Listed C1D2, RoHS, GOST, KC, DNV



## Product Specifications

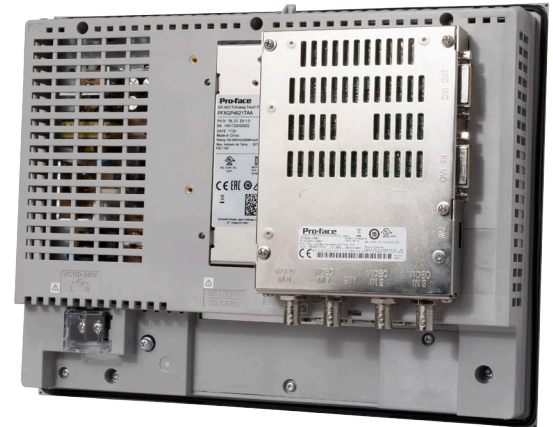
<b>Part Number to Order</b>	<b>PFXGP4521TAA</b>
<b>SD Card</b>	Yes
<b>Serial Ports (COM1)</b>	RS-232C
<b>Serial Ports (COM2)</b>	RS-422/485
<b>Ethernet</b>	Yes
<b>USB (1)</b>	Type-A (2.0)
<b>USB (2)</b>	Mini-B (2.0)
<b>Brightness / Contrast</b>	16 levels of adjustment
<b>Programming Memory</b>	32mb Flash EPROM
<b>Backup Memory</b>	320kb SRAM w/ battery backup
<b>Ambient Operating Temp</b>	0-55 deg C [32 to 131 deg F]
<b>Input Voltage</b>	100-240 VAC
<b>Power Consumption</b>	100 Vac: <44VA 240 Vac: <58VA

## 12.1" GP4000VM

Analog Touchscreen Operator Interface  
with Video Unit Attachment Option

## General Specifications

<b>Graphic Display Resolution</b>	800 x 600 pixels (SVGA)
<b>Display Type and Size</b>	TFT Color LCD (12.1")
<b>Display Colors</b>	65,536 Colors (No blink)/16,384 Colors (blink)
<b>Display Area</b>	W246.0 x H184.5 mm [W9.69 x H7.26 in.]
<b>Touch Screen</b>	Resistive Film (analog)
<b>Backlight</b>	White LED
<b>Storage Temperature</b>	-20 to 60° C [-4 to 140° F]
<b>Environmental Ratings</b>	IP65f, NEMA Type 4x/13
<b>Certifications</b>	CE, CSA, UL Listed C1D2, RoHS, GOST, KC, DNV



## Product Specifications

Part Number to Order	PFXGP4621TAA	PFXGP4621TAD
SD Card		Yes
Serial Ports (COM1)		RS-232C
Serial Ports (COM2)		RS-422/485
Ethernet		Yes
USB (1)		Type-A (2.0)
USB (2)		Mini-B (2.0)
Brightness / Contrast	16 levels of adjustment	
Programming Memory	32mb Flash EPROM	
Backup Memory	320kb SRAM w/ battery backup	
Ambient Operating Temp	0-55 deg C [32 to 131 deg F]	
Input Voltage	100-240 VAC	24 Vdc
Power Consumption	100 Vac: <44VA 240 Vac: <58VA	

# GP4000VM Unit

Analog Touchscreen Operator Interface  
with Video Unit Attachment Option

## General Specifications

<b>Graphic Display Resolution</b>	320 x 240 pixels (QVGA)
<b>Display Type and Size</b>	TFT Color LCD (3.5")
<b>Display Colors</b>	65,536 Colors
<b>Display Area</b>	W 70.56 x H 52.92 mm [W 2.78 x H 2.08 in]
<b>Touch Screen</b>	Resistive Film (analog)
<b>Backlight</b>	White LED
<b>Storage Temperature</b>	-20 to 60° C [-4 to 140° F]
<b>Environmental Ratings</b>	NEMA #250 Type 4x, Display IP65f, Rear IP20
<b>Certifications</b>	CE, CSA, UL Listed C1D2, RoHS, GOST, KC, DNV

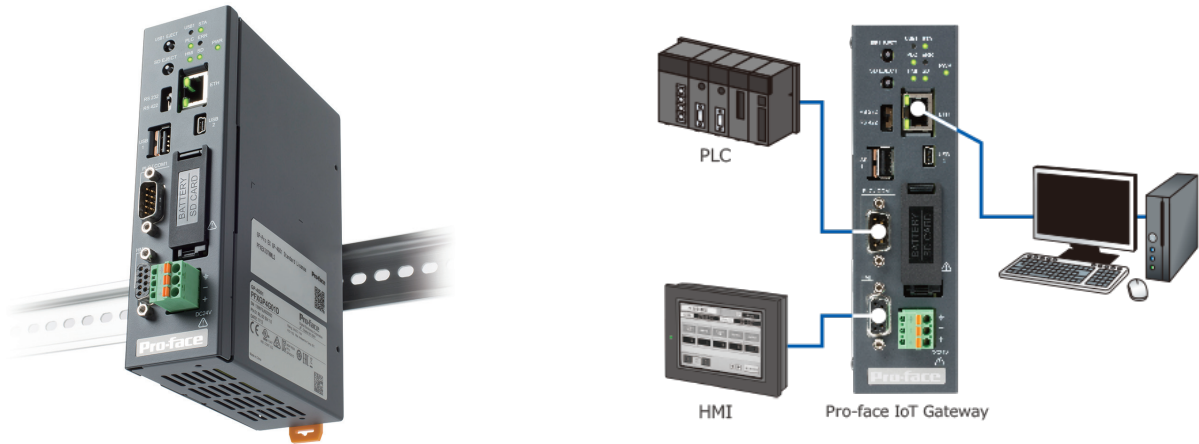


## Product Specifications

Part Number to Order	PFXGM4201TAD	PFXGM4B01D*
<b>SD Card</b>	No	No
<b>Serial Ports (COM1)</b>	RS-232C / 422 / 485	RS-232C / 422 / 485
<b>Serial Ports (COM2)</b>	No	No
<b>Ethernet</b>	x1	x1
<b>USB (1)</b>	Type-A (2.0)	Type-A (2.0)
<b>USB (2)</b>	Mini-B (2.0)	Mini-B (2.0)
<b>Brightness / Contrast</b>	16 levels of adjustment	n/a
<b>Programming Memory</b>	8mb Flash EPROM	8mb Flash EPROM
<b>Backup Memory</b>	128kb nvSRAM	128kb nvSRAM
<b>Ambient Operating Temp</b>	0 to 50 °C (32 to 122 °F)	0 to 50 °C (32 to 122 °F)
<b>Input Voltage</b>	24 VDC	24 VDC
<b>Power Consumption</b>	6.5 W or less	1.6 W or less

\* Rear Module only. Rear Module Installation Adapter "PFZXMADSA1" is required for installation.

# GP4G01 Pro-face IoT Gateway



## Description

The new Pro-face IoT Gateway, GP4G01, relays data communication between the HMI and the PLC. No ports and no program changes are required, and it retains communication of the connected devices even when Pro-face IoT Gateway is powered off.

## Features

- Relaying data communication between HMI and PLC (when using the gateway mode)
- Connect without serial communication I/F available
- Collect data without changing programs
- Change settings on a Web browser

## Product Specifications

<b>Part Number to Order</b>	<b>PFXGP4G01DNWLS</b>
<b>SD Card</b>	Yes
<b>Serial Ports (PLC/COM1)</b>	RS-232C/422/485
<b>Serial Ports (HMI)</b>	RS-232C/422/485
<b>Ethernet</b>	(RJ-45) x 1
<b>USB (1)</b>	Type-A (2.0) x 1
<b>USB (2)</b>	Mini-B (2.0) x 1
<b>Application Memory</b>	FLASH EPROM 32MB
<b>Backup Memory</b>	SRAM 512KB
<b>Input Voltage</b>	24Vdc
<b>Ambient Operating Temperature</b>	0 to 60°C (32 to 140 °F)
<b>Power Consumption</b>	11W or less (Maximum power consumption) 7W or less (When power is not supplied to external devices)

## GP4000 Modular



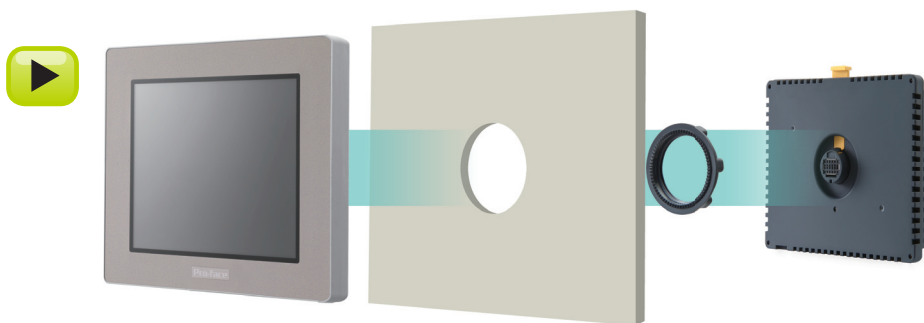
### Description

This dedicated operator interface touch screen is ideal for OEMs and high graphical detail applications. It is part of a latest line of Pro-face brand operator interfaces. The bright, crisp, and clear QVGA display of this model is complemented with a large viewing area, and no grid analog for improved visibility and precise part placement.

A host of features include Ethernet, USB, and RS232, 422, 485 serial ports. The extensive network connectivity allows support of up to two simultaneous protocols making this a highly versatile operator interface.

### Features

- 65k Color, Clear, Bright, High-Resolution TFT Display
- Energy Efficient LED Display
- No Grid Analog Touch Panel for Improved Visibility and Precise Part Placement
- Supports different types of Protocol Drivers (communicates to two selected drivers)
- Separate front & rear module for quick installation in 22mm hole
- 10/100 Base-T Ethernet, and USB



Modular Type For Easy Mounting

# 3.5" Modular – GP4000

Touchscreen Operator Interface with Separate Front and Rear Module and 22mm Mounting

## General Specifications

<b>Graphic Display Resolution</b>	320 x 240 pixels (QVGA)
<b>Display Type and Size</b>	TFT Color LCD (3.5")
<b>Display Colors</b>	65,536 Colors
<b>Display Area</b>	W 70.56 x H 52.92 mm [W 2.78 x H 2.08 in]
<b>Touch Screen</b>	Resistive Film (analog)
<b>Backlight</b>	White LED
<b>Storage Temperature</b>	-20 to 60° C [-4 to 140° F]
<b>Environmental Ratings</b>	NEMA #250 Type 4x, Display IP65f, Rear IP20
<b>Certifications</b>	CE, CSA, UL Listed C1D2, RoHS, GOST, KC, DNV

3D  
CAD

360



## Product Specifications

Part Number to Order	PFXGM4201TAD	PFXGM4B01D*
<b>SD Card</b>	No	No
<b>Serial Ports (COM1)</b>	RS-232C / 422 / 485	RS-232C / 422 / 485
<b>Serial Ports (COM2)</b>	No	No
<b>Ethernet</b>	x1	x1
<b>USB (1)</b>	Type-A (2.0)	Type-A (2.0)
<b>USB (2)</b>	Mini-B (2.0)	Mini-B (2.0)
<b>Brightness / Contrast</b>	16 levels of adjustment	n/a
<b>Programming Memory</b>	8mb Flash EPROM	8mb Flash EPROM
<b>Backup Memory</b>	128kb nvSRAM	128kb nvSRAM
<b>Ambient Operating Temp</b>	0 to 50 °C (32 to 122 °F)	0 to 50 °C (32 to 122 °F)
<b>Input Voltage</b>	24 VDC	24 VDC
<b>Power Consumption</b>	6.5 W or less	1.6 W or less

\* Rear Module only. Rear Module Installation Adapter "PFXZXMADSA1" is required for installation.



## 5.7" Modular – GP4000

Touchscreen Operator Interface with Separate Front and Rear Module and 22mm Mounting

## General Specifications

<b>Graphic Display Resolution</b>	320 x 240 pixels (QVGA)
<b>Display Type and Size</b>	TFT Color LCD (5.7")
<b>Display Colors</b>	65,536 Colors
<b>Display Area</b>	W 115.2 x H 86.4 mm [W 4.53 x H 3.4 in]
<b>Touch Screen</b>	Resistive Film (analog)
<b>Backlight</b>	White LED
<b>Storage Temperature</b>	-20 to 60° C [-4 to 140° F]
<b>Environmental Ratings</b>	NEMA #250 Type 4x, Display IP65f, Rear IP20
<b>Certifications</b>	CE, CSA, UL Listed C1D2, RoHS, GOST, KC, DNV

3D  
CAD

360



## Product Specifications

Part Number to Order	PFXGM4301TAD	PFXGM4B01D*
<b>SD Card</b>	No	No
<b>Serial Ports (COM1)</b>	RS-232C / 422 / 485	RS-232C / 422 / 485
<b>Serial Ports (COM2)</b>	No	No
<b>Ethernet</b>	Yes	x1
<b>USB (1)</b>	Type-A (2.0)	Type-A (2.0)
<b>USB (2)</b>	Mini-B (2.0)	Mini-B (2.0)
<b>Brightness / Contrast</b>	16 levels of adjustment	n/a
<b>Programming Memory</b>	8mb Flash EPROM	8mb Flash EPROM
<b>Backup Memory</b>	128kb nvSRAM	128kb nvSRAM
<b>Ambient Operating Temp</b>	0 to 50 °C (32 to 122 °F)	0 to 50 °C (32 to 122 °F)
<b>Input Voltage</b>	24 VDC	24 VDC
<b>Power Consumption</b>	6.8 W or less	1.6 W or less

\* Rear Module only. Rear Module Installation Adapter "PFXZXMADSA1" is required for installation.

# GP4100 Compact



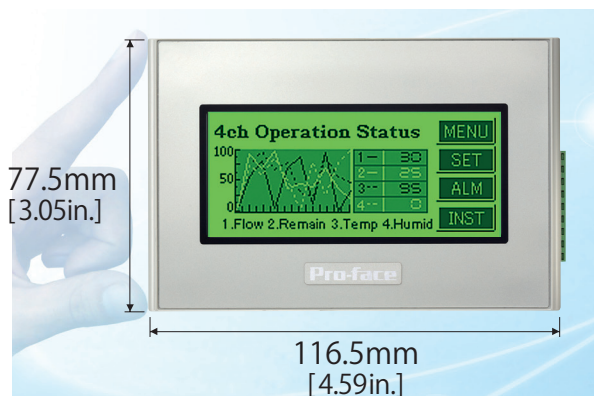
## Description

The Pro-face AGP4100 Series compact operator interface offers a crisp, clear and bright, 200 x 80 pixel monochrome LCD Display, with Analog Touch Panel for improved visibility and precise part placement. It comes equipped with energy efficient, maintenance free Green/Orange/Red or White/Pink/Red LED backlights.

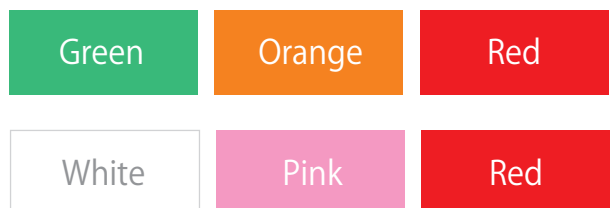
And now introducing the GP4100T operator interface with 480 x 272 pixel full color TFT display with 65,536 colors. Small, powerful, and easy to use!

## Features

- Crisp, clear and bright, 200 x 80 resolution Monochrome LCD Display or 480 x 272 Full Color Display
- No Grid Analog Touch Panel for improved visibility and precise part placement
- Touch Panel operation within a text panel replacement form factor
- Energy efficient, maintenance free LED backlight



Select between two patterns of 3-color switchable backlights



## 4.3" Compact – GP4100T

Full Color Touchscreen  
Operator Interface Interface

### General Specifications

<b>Graphic Display Resolution</b>	480 x 272 pixels
<b>Display Area</b>	W 95 x H 53.9 mm
<b>Display Type and Size</b>	TFT Color LCD (4.3")
<b>Display Colors</b>	62,536 colors
<b>Touch Screen</b>	Resistive Film (analog)
<b>Backlight</b>	White LED
<b>Brightness Adjustment</b>	16 levels of adjustment
<b>Ambient Operating Temp</b>	0 to 50° C [32 to 122° F]
<b>Storage Temperature</b>	-20 to 60° C [-4 to 140° F]
<b>Environmental Ratings</b>	IP65f, Type 1, Type 4x (indoor use only), Type 13
<b>Certifications</b>	CE, UL 61010-1, 61010-2-201



### Product Specifications

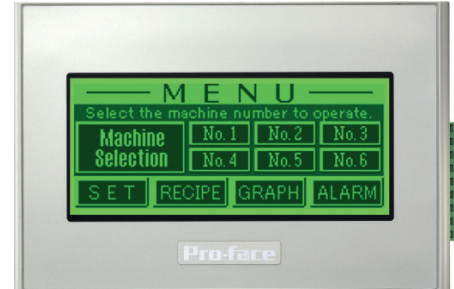
Part Number to Order	PFXGP4114T2D	PFXGP4115T2D	PFXGP4115T3D	PFXGP4116T2D
<b>Application Memory</b>	8MB	8MB	8MB	8MB
<b>Backup Memory</b>	Flash EPROM 128 MB	Flash EPROM 128 MB	NVRAM	Flash EPROM 128 MB
<b>Serial Port</b>	n/a	RS-232C x1	RS-232C x1	RS-422/485 x1
<b>Ethernet</b>	RJ-45 Modular Jack x1	n/a	n/a	n/a
<b>USB Type A</b>	USB 2.0 (Type A) x1	USB 2.0 (Type A) x1	USB 2.0 (Type A) x1	USB 2.0 (Type A) x1
<b>USB mini-B</b>	USB 2.0 (mini-B) x1	USB 2.0 (mini-B) x1	USB 2.0 (mini-B) x1	USB 2.0 (mini-B) x1
<b>Input Voltage</b>	12 to 24 Vdc	12 to 24 Vdc	12 to 24 Vdc	12 to 24 Vdc
<b>Power Consumption (supplied by USB)</b>	3.9 W or less	3.4 W or less	3.4 W or less	3.6 W or less
<b>Power Consumption (not supplied by USB)</b>	8.1 W or less	7.5 W or less	7.5 W or less	7.7 W or less

## 3.4" Compact – GP4100

Monochrome Touchscreen  
Operator Interface Interfacer

## General Specifications

<b>Graphic Display Resolution</b>	200 x 80 pixels
<b>Display Area</b>	W 79.985 x H 31.985 mm
<b>Display Type and Size</b>	STN Monochrome LCD (3.4")
<b>Touch Screen</b>	Resistive Film (analog)
<b>Backlight</b>	LED (G1-Green/Red / W1-White/Red)
<b>Brightness Adjustment</b>	16 levels of adjustment
<b>Contrast Adjustment</b>	8 levels of adjustment
<b>Ambient Operating Temp</b>	0 to 50° C [32 to 122° F]
<b>Storage Temperature</b>	-20 to 60° C [-4 to 140° F]
<b>Environmental Ratings</b>	IP65f, NEMA #250 Type 4x/13
<b>Certifications</b>	CE, UL Listed, RoHS, CSA

3D  
CAD

## Product Specifications

Part Number to Order	AGP4104G1D	AGP4105G1D	AGP4106G1D	AGP4107G1D
	AGP4104W1D	AGP4105W1D	AGP4106W1D	AGP4107W1D
<b>Display Colors</b>	G1 Models - Green/Orange/Red (16 shades) / W1 Models - White/Pink/Red (16 shades)			
<b>Serial Port (COM1)</b>	n/a	RS232C	RS422/485	RS-485 (isolated)
<b>Ethernet</b>	x1	n/a	n/a	n/a
<b>USB Ports</b>	USB 2.0 Type A	USB 2.0 Type A	USB 2.0 Type A	USB 2.0 Type A
<b>USB Ports</b>	USB 2.0 Type mini-B	USB 2.0 Type mini-B	USB 2.0 Type mini-B	USB 2.0 Type mini-B
<b>Application Memory</b>	2.2MB Flash EPROM	2.2MB Flash EPROM	2.2MB Flash EPROM	2.2MB Flash EPROM
<b>Backup Memory</b>	128kb	128kb	128kb	128kb
<b>Input Voltage</b>	24 VDC	24 VDC	24 VDC	24 VDC
<b>Power Consumption</b>	2.7W or less	2.7W or less	2.7W or less	2.7W or less

# GP4000H Graphical Pendant Station

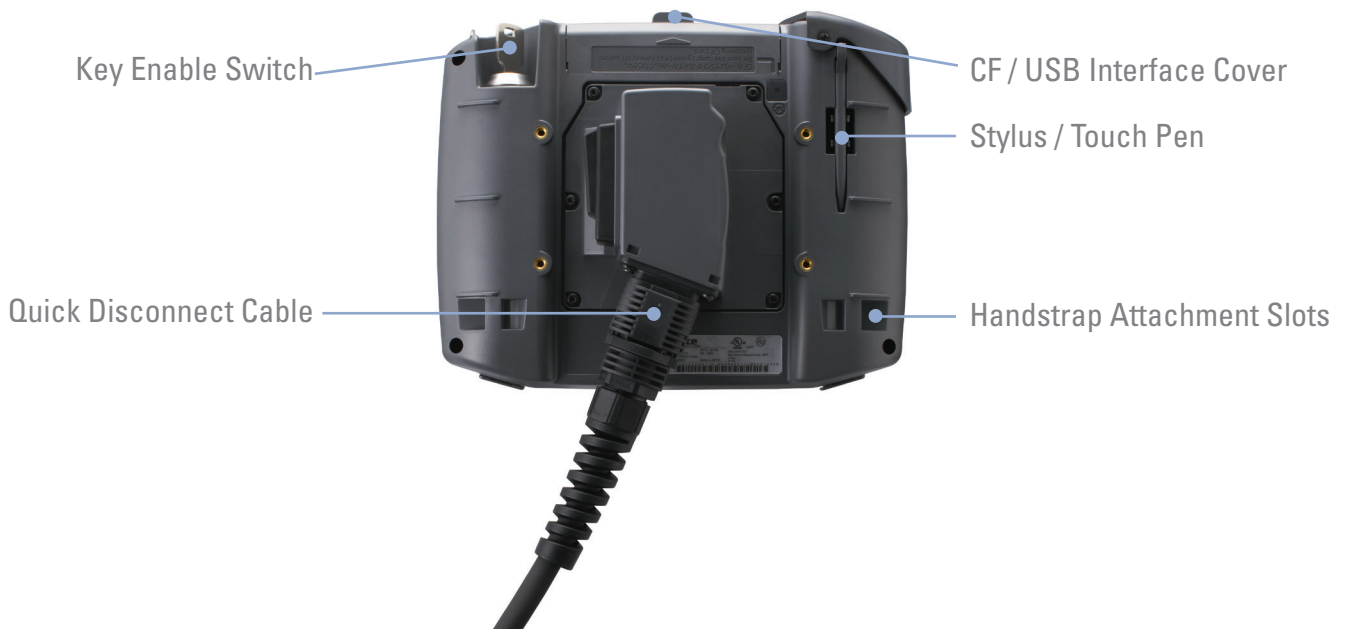


## Description

The Pro-face GP4000H Graphical Pendant Station offers multiple models to meet the needs of your application. The standard product line offers extensive, built-in, time-saving features that help customers develop fast, consistent, standardized graphical interfaces. Add single platform data management and control with GP-Pro Ex and Pro-Server EX software to complete the winning combination.

## Features

- Tethered HMIs with full graphic touch screen
- Built-in Safety Features: Emergency Stop, 3-Position Enable Switch, and Key Switch
- Ideal for use with portable machine diagnostic or maintenance carts
- Connect directly to PLC or use easy disconnect access points



# 5.7" Graphical Pendant Station – GP4000H

Touchscreen Operator Interface with 11 Function Keys and Dual Protocol Support.

## General Specifications

<b>Touch Screen</b>	Resistive Film (analog)
<b>Backlight</b>	White LED
<b>Ambient Operating Temp</b>	0 to 40° C (32 to 104° F)
<b>Storage Temperature</b>	-20 to 60° C [-4 to 140° F]
<b>Environmental Ratings</b>	IP65
<b>Certifications</b>	CE, UL, CSA



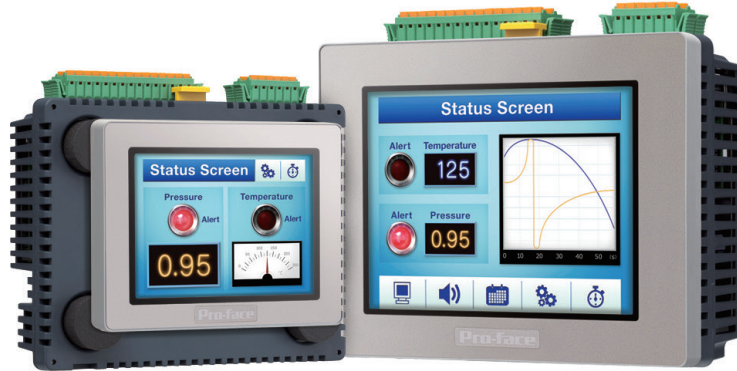
3D  
CAD



## Product Specifications

Part Number to Order	PFXGP4311HTAD	PFXGP4311HTADER	PFXGP4311HTADERK Red PFXGP4311HTADEYK Yellow PFXGP4311HTADEGK Gray
<b>Emergency Switch</b>	No emergency switch	Emergency switch (Red)	Emergency switch + Key switch
<b>Display Type and Size</b>	TFT Color LCD (5.7")		
<b>Display Colors</b>	65,536 Colors (No blink) / 16,384 (No blink)		
<b>Display Area</b>	W115.2 x H86.4 mm [W4.54 x H3.40 in]		
<b>Brightness/Contrast</b>	16 Levels (Adjusted with touch panel)		
<b>Graphic Display Resolution</b>	640 x 480 Pixels (VGA)		
<b>Function Keys</b>	11 Keys		
<b>SD Card</b>	SD Card Slot x 1		
<b>Serial Ports (COM1)</b>	RS-232C / RS-422 / RS-485		
<b>Ethernet</b>	Yes		
<b>USB (1)</b>	Type-A (1.1)		
<b>Application Memory</b>	Flash EPROM 32MB		
<b>Data Backup</b>	SRAM 320kb		
<b>Input Voltage</b>	24 VDC		
<b>Power Consumption</b>	12W or less (When power is not supplied to external devices: 8W or less)		

# LT4000 Modular



## Description

The LT4000M provides both HMI, digital and analog control in a single unit.

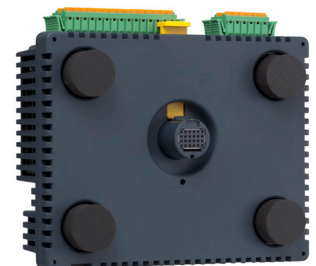
A unique modular style allows the display and rear module to be mounted directly (to each other) or separately (connected by a 3 or 5m cable).

## Features

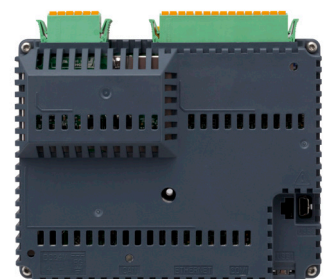
- Compact all-in-one unit for easy installation in small spaces
- 22mm hole mounting (similar to a pushbutton) saves time
- Flexible installation choices for integrated or separated display and rear module



Mount the unit as one (with 22mm hole mounting), or separate with the processor on a DIN rail with the available separation cable.



Easy wiring with removable spring I/O connector



## 3.5" Modular – LT4000

Touchscreen Operator Interface  
plus Control, with 22mm mounting

## General Specifications

<b>Graphic Display Resolution</b>	320 x 240 pixels (QVGA)
<b>Display Type and Size</b>	TFT Color LCD (3.5")
<b>Display Colors</b>	65,536 Colors
<b>Display Area</b>	W 70.56 x H 52.92 mm [W 2.78 x H 2.08 in]
<b>Touch Screen</b>	Resistive Film (analog)
<b>Backlight</b>	White LED
<b>Ambient Operating Temp</b>	0 to 50° C [32 to 122° F]
<b>Storage Temperature</b>	-20 to 60° C [-4 to 140° F]
<b>Environmental Ratings</b>	IP65f, NEMA #250 Type 4x, rear module IP20
<b>Certifications</b>	CE, CSA, UL Listed, RoHS, GOST, KC, DNV/GL



## Product Specifications

Part Number to Order	Source	<b>PFXLM4201TADAC*</b>	<b>PFXLM4201TADDC*</b>
	Sink	<b>PFXLM4201TADAK*</b>	<b>PFXLM4201TADDK*</b>
<b>Serial Ports (COM1)</b>		RS-232C / 485 (RJ45)	RS-232C / 485 (RJ45)
<b>Ethernet</b>		x1	x1
<b>USB (1)</b>		Type-A (2.0)	Type-A (2.0)
<b>USB (2)</b>		Mini-B (2.0)	Mini-B (2.0)
<b>Built in DIO (Input)</b>		12 points	20 points
<b>Built in DIO (Output)</b>		6 points	10 points
<b>Built in AIO (Input)</b>		2 points (13bit) / 2 points (16 bit)	0 points
<b>Built in AIO (Output)</b>		2 points (12 bit)	0 points
<b>CANopen Master</b>		63 stations	63 stations
<b>Brightness/Contrast Controls</b>		16 levels of adjustment	16 levels of adjustment
<b>Backup Memory</b>		128KB nvSRAM	128KB nvSRAM
<b>Programming Memory</b>		16MB Flash EPROM	16MB Flash EPROM
<b>Input Voltage</b>		24 VDC	24 VDC
<b>Power Consumption</b>		<9W	<9W

\* K suffix = Sink

\* C suffix = Source



## 5.7" Modular – LT4000

Touchscreen Operator Interface  
plus Control, with 22mm mounting

## General Specifications

<b>Graphic Display Resolution</b>	320 x 240 pixels (QVGA)
<b>Display Type and Size</b>	TFT Color LCD (5.7")
<b>Display Colors</b>	65,536 Colors
<b>Display Area</b>	W 115.2 x H 86.4 mm [W 4.53 x H 3.4 in]
<b>Touch Screen</b>	Resistive Film (analog)
<b>Backlight</b>	White LED
<b>Ambient Operating Temp</b>	0 to 50° C [32 to 122° F]
<b>Storage Temperature</b>	-20 to 60° C [-4 to 140° F]
<b>Environmental Ratings</b>	IP65f, NEMA #250 Type 4x, rear module IP20
<b>Certifications</b>	CE, CSA, UL Listed, RoHS, GOST, KC, DNV/GL



## Product Specifications

Part Number to Order	Source	PFXLM4301TADAC*	PFXLM4301TADDC*
	Sink	PFXLM4301TADAK*	PFXLM4301TADDK*
<b>Serial Ports (COM1)</b>		RS-232C / 485 (RJ45)	RS-232C / 485 (RJ45)
<b>Ethernet</b>		x1	x1
<b>USB (1)</b>		Type-A (2.0)	Type-A (2.0)
<b>USB (2)</b>		Mini-B (2.0)	Mini-B (2.0)
<b>Built in DIO (Input)</b>		12 points	20 points
<b>Built in DIO (Output)</b>		6 points	10 points
<b>Built in AIO (Input)</b>		2 points (13bit) / 2 points (16 bit)	0 points
<b>Built in AIO (Output)</b>		2 points (12 bit)	0 points
<b>CANopen Master</b>		63 stations	63 stations
<b>Brightness/Contrast Controls</b>		16 levels of adjustment	16 levels of adjustment
<b>Backup Memory</b>		128KB nvSRAM	128KB nvSRAM
<b>Programming Memory</b>		16MB Flash EPROM	16MB Flash EPROM
<b>Input Voltage</b>		24 VDC	24 VDC
<b>Power Consumption</b>		<10W	<10W

\* K suffix = Sink

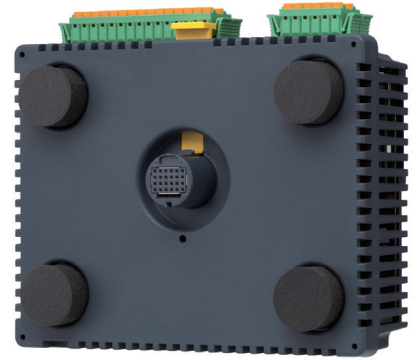
\* C suffix = Source

# Rear Module – LT4000

Touchscreen Operator Interface  
plus Control, with 22mm mounting

## General Specifications

<b>Graphic Display Resolution</b>	320 x 240 pixels (QVGA)
<b>Ambient Operating Temp</b>	Horizontal installation: 0 to 50°C (32 to 122 °F) Vertical installation: 0 to 40°C (32 to 104°F)
<b>Storage Temperature</b>	-20 to 60° C [-4 to 140° F]
<b>Environmental Ratings</b>	IP20
<b>Certifications</b>	CE, CSA, UL Listed, RoHS, GOST, KC, DNV



## Product Specifications

Part Number to Order	<b>PFXLM4B01DDK*</b> <b>PFXLM4B01DDC*</b>	<b>PFXLM4B01DAK*</b> <b>PFXLM4B01DAC*</b>
<b>Programming Memory</b>	16MB Flash EPROM	16MB Flash EPROM
<b>Backup Memory</b>	128KM nvSRAM	128KM nvSRAM
<b>Serial Ports (COM1)</b>	RS-232C / 485 (RJ45)	RS-232C / 485 (RJ45)
<b>Ethernet</b>	x1	x1
<b>USB (1)</b>	Type-A (2.0)	Type-A (2.0)
<b>USB (2)</b>	Mini-B (2.0)	Mini-B (2.0)
<b>Built in DIO (Input)</b>	20 points	12 points
<b>Built in DIO (Output)</b>	10 points	6 points
<b>Built in AIO (Input)</b>	n/a	2 channel (13 bit), 2 channel (16 bit)
<b>Built in AIO (Output)</b>	n/a	2 channel (12 bit)
<b>CANopen Master</b>	63 stations	63 stations
<b>Input Voltage</b>	24 VDC	24 VDC
<b>Power Consumption</b>	<9W	<9W

\* K suffix = Sink

\* C suffix = Source

\* Rear Module only. Rear Module Installation Adapter "PFXZXMADSA1" is required for installation.

# LT3000 Control

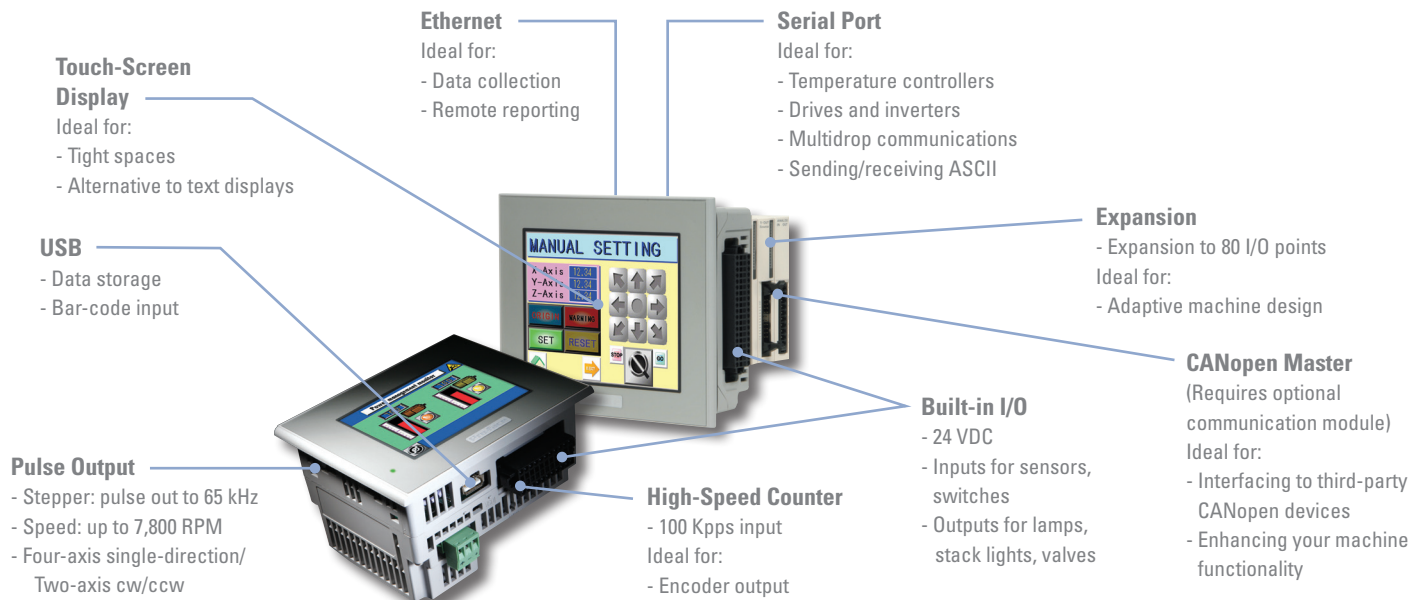


## Description

The LT3000 operator interface combines built-in PLC functionality integrated with an HMI. It is an all-in-one hardware and software HMI Control Solution. Lowering overall system costs and panel space. Use up to 2 or 3 I/O modules connected directly to the back of the LT3000 as local I/O . The optional CANopen Master module can be used if remote I/O, Sensor, or Motion connections are required.

## Features

- One Software Application for HMI & Control
- Space-saving HMI plus Control in One Unit
- Build Flexibility into your Machines
- Eliminate PLC/custom controls
- Cut remote maintenance costs



# 5.7" Control – LT3000

All-In-One Operator  
Interface plus Control

## General Specifications

<b>Graphic Display Resolution</b>	320 x 240 pixels (QVGA)
<b>Effective Display Area</b>	W115.2mm x H86.4mm [4.54in x 3.4in]
<b>Backlight</b>	White LED
<b>Touch Screen</b>	Resistive Film (analog)
<b>Ambient Operating Temp</b>	0 to 50° C [32 to 122° F]
<b>Storage Temperature</b>	-20 to 60° C [-4 to 140° F]
<b>Environmental Ratings</b>	IP65f, NEMA #250 Type 4x/13
<b>Certifications</b>	CE, CSA, UL Listed C1D2



## Product Specifications

<b>Part Number to Order</b>	<b>LT3300-T1-D24-K*</b>
	<b>LT3300-T1-D24-C*</b>
<b>Display Type and Size</b>	5.7" TFT Color LCD
<b>Display Colors</b>	65,536 Colors (No blink) 16,384 Colors (Blink)
<b>Programming Memory</b>	6MB Flash EPROM
<b>Backup Memory</b>	128MB SRAM
<b>Brightness/Contrast</b>	8 levels for brightness
<b>DIO Input</b>	16 points
<b>DIO Output</b>	16 points
<b>USB</b>	1 Type A (1.1)
<b>Serial</b>	RS232C / 422 / 485
<b>Ethernet</b>	x1
<b>I/O Expansion</b>	3 EXM Modules
<b>Input Voltage</b>	24 VDC
<b>Power Consumption</b>	27W or less

\* K suffix = Sink

\* C suffix = Source

# AGP3000 Control



## Description

The bright, crisp, and clear QVGA display of the AGP3000 provides a wide angle viewing area, with a high resolution no-grid analog resistive touch screen for a higher level of screen clarity and precise part placement.

### plus CANopen

The AGP3000 with CANopen Master interface connects up to 63 slave devices. For great performance, compact size, flexibility and network connectivity options, HMI with CANopen is the perfect choice.

### plus FlexNetwork

The AGP3000 with FlexNetwork interface allows you to expand and control distributed I/O modules. Great for data intensive applications with detailed graphic requirements.

### plus Discrete I/O

The AGP3000 with Discrete I/O combines HMI and PLC functions while providing 6 outputs and 2 inputs, built-in—no extra modules needed.

## Features

- 65,536 Colors TFT, Clear, Bright, High-Resolution TFT Display
- 64-bit RISC 133Mhz CPU for Ultra-Fast Screen Refresh and Data Sampling
- 10/100 Base-T Ethernet, USB Serial (MPI) and CompactFlash Communications
- CANopen Master interface connects up to 63 CANopen slave devices (I/O, Sensors, Motion) of your choice
- Expand and control distributed I/O modules via FlexNetwork Interface
- All-in-One HMI and PLC + 6 discrete inputs and 2 discrete outputs

## 5.7" w/ CANopen – AGP3000

All-In-One Operator Interface plus Control  
with built-in CANopen Master Controller

## General Specifications

<b>Graphic Display Resolution</b>	320 x 240 pixels (QVGA)
<b>Display Area</b>	W115.2 x H86.4 mm [W4.54 x H3.40 in]
<b>Touch Screen</b>	Resistive Film (analog)
<b>Backlight</b>	CCFL
<b>Storage Temperature</b>	-20 to 60° C [-4 to 140° F]
<b>Ambient Operating Temp</b>	0 to 50° C [32 to 122° F]
<b>Environmental Ratings</b>	IP65f, NEMA #250 Type 4x/13
<b>Certifications</b>	CE, CSA, UL Listed C1D2, RoHS

3D  
CAD

## Product Specifications

<b>Part Number to Order</b>	<b>AGP3300-T1-D24-CA1M</b>
<b>Display Type and Size</b>	5.7" TFT Color LCD
<b>Display Colors</b>	65,536 Colors (No blink); 16,384 (Blink)
<b>CF Card</b>	1 slot, Type II
<b>Serial Ports (COM1)</b>	RS-232C / 422 / 485
<b>Serial Ports (COM2)</b>	RS-422 / 485
<b>Ethernet</b>	x1
<b>USB (1)</b>	Type-A (1.1)
<b>Brightness/Contrast Controls</b>	8 levels
<b>Programming Memory</b>	6MB Flash EPROM
<b>Backup Memory</b>	320kb SRAM
<b>CANopen Master</b>	63 stations
<b>Input Voltage</b>	24 VDC
<b>Power Consumption</b>	26W or less

# 5.7" w/ FlexNetwork – AGP3000 All-In-One Operator Interface plus Control with Dual Channel FlexNetwork Port

## General Specifications

<b>Graphic Display Resolution</b>	320 x 240 pixels (QVGA)
<b>Display Area</b>	W115.2 x H86.4 mm [W4.54 x H3.40 in]
<b>Touch Screen</b>	Resistive Film (analog)
<b>Backlight</b>	CCFL
<b>Storage Temperature</b>	-20 to 60° C [-4 to 140° F]
<b>Ambient Operating Temp</b>	0 to 50° C [32 to 122° F]
<b>Environmental Ratings</b>	IP65f, NEMA #250 Type 4x/13
<b>Certifications</b>	CE, CSA, UL Listed C1D2



3D  
CAD



## Product Specifications

<b>Part Number to Order</b>	<b>AGP3300-T1-D24-FN1M</b>
<b>Display Type and Size</b>	5.7" TFT Color LCD
<b>Display Colors</b>	65,536 Colors (No blink); 16,384 (Blink)
<b>CF Card</b>	1 slot, Type II
<b>Serial Port (COM1)</b>	RS-232C / 422 / 485
<b>Serial Port (COM2)</b>	RS-422 / 485
<b>Ethernet</b>	x1
<b>USB (1)</b>	Type-A (1.1)
<b>Brightness/Contrast</b>	8 levels
<b>Programming Memory</b>	6MB Flash EPROM
<b>Backup Memory</b>	320kb SRAM
<b>Flex Network Interface</b>	63 nodes
<b>Input Voltage</b>	24 VDC
<b>Power Consumption</b>	26W or less

## 5.7" w/ Discrete I/O – AGP3000

All-In-One Operator Interface plus  
Control with built-in Discrete I/O

## General Specifications

<b>Graphic Display Resolution</b>	320 x 240 pixels (QVGA)
<b>Display Area</b>	W115.2 x H86.4 mm [W4.54 x H3.40 in]
<b>Touch Screen</b>	Resistive Film (analog)
<b>Backlight</b>	CCFL
<b>Storage Temperature</b>	-20 to 60° C [-4 to 140° F]
<b>Ambient Operating Temp</b>	0 to 50° C [32 to 122° F]
<b>Environmental Ratings</b>	IP65f, NEMA #250 Type 4x/13
<b>Certifications</b>	CE, CSA, UL Listed C1D2

3D  
CAD

## Product Specifications

**Part Number to Order** **AGP3300-T1-D24-D81K\***  
**AGP3300-T1-D24-D81C\***

<b>Display Type and Size</b>	5.7" TFT Color LCD
<b>Display Colors</b>	65,536 Colors (No blink); 16,384 (Blink)
<b>CF Card</b>	1 slot, Type II
<b>Serial Ports (COM1)</b>	RS-232C / 422 / 485
<b>Serial Ports (COM2)</b>	RS-422 / 485
<b>Ethernet</b>	x1
<b>USB (1)</b>	Type-A (1.1)
<b>Brightness/Contrast</b>	8 levels
<b>Programming Memory</b>	6MB Flash EPROM
<b>Backup Memory</b>	320kb SRAM
<b>Discrete Input</b>	6 points
<b>Discrete Output</b>	2 points
<b>Input Voltage</b>	24VDC
<b>Power Consumption</b>	26W or less

\* K suffix denotes product is Sink type

\* C suffix denotes product is Source type



## EZ Series USB Solutions



### Description

EZ Fingerprint Recognition Unit can improve security by providing fingerprint authentication, improving security efficiency.

EZ Illuminated Switch can accommodate the need for hardware switches and light indicators. Displayable indicator colors and patterns can be specified via the software.

EZ Numpad is an alphanumeric keypad that features the same 22-millimeter holes used to install hardware switches and lamps used on production work sites.

EZ Tower Light makes your status system easier to understand by leveraging the multi-color LEDs which allows the flexibility to control 4 colors and 2 flash rates per unit.

EZ LAN Adapter is a conversion adapter that attaches to the USB (Type A) interface on the display unit so you can use it as an Ethernet interface.

### Features

- Easy to connect - USB Connection
- Easy to install - 22mm Hole Mounting
- Easy to setup - No need for special programming, easy setup by GP-Pro EX
- Multi-color LED's allow colors and functions to be changed per pre-set status
- Switch between input and function keys

Think Outside the HMI



# Fingerprint Recognition Unit

Fingerprint recognition unit easily connected with HMI via USB

## General Specifications

<b>Rated Input Voltage</b>	24 Vdc
<b>Input Voltage Limits</b>	20 to 30 Vdc
<b>Power Consumption</b>	1.6W max
<b>Surrounding Air Temperature</b>	0 to 50° C (32 to 122° F)
<b>Storage Temperature</b>	-25 to 70° C (-13 to 158° F)
<b>Environmental Ratings</b>	IP65 front face / IP20 back
<b>Supported Software</b>	GP-Pro EX Ver. 3.1 or later
<b>Certifications</b>	CE, CSA, UL, RoHS



## Product Specifications

<b>Part Number to Order</b>	<b>PFXZCCEUSS1</b>
<b>External Dimensions</b>	W 69.3 x H 54 x D 78.5mm (W 2.73 x H 2.13 x D 3.09in.)
<b>Weight</b>	140g [0.31 lb]
<b>Memory Capacity</b>	100 users (2 fingerprints for one user)
<b>Security Level Setting</b>	15 levels
<b>Connection</b>	Connect via USB cable
<b>USB Cable Length</b>	USB cable: 1.0m (3.28 ft.); Power cable: 2.0m (6.56ft.)
<b>Connectable HMI</b>	GP4000, GP4000M, WinGP, LT4000M, SP5000

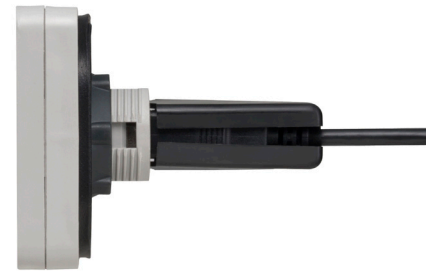


# Illuminated Switch

A unit of 5 illuminated switches with multiple color LED easily connected with HMI via USB

## General Specifications

<b>Rated Input Voltage</b>	5 Vdc (powered from USB bus)
<b>Input Voltage Limits</b>	4.75 to 5.25 Vdc
<b>Power Consumption</b>	2.0W max
<b>Surrounding Air Temperature</b>	0 to 55° C (32 to 131° F)
<b>Storage Temperature</b>	-20 to 60° C (-4 to 140° F)
<b>Environmental Ratings</b>	IP65 front face / IP20 back
<b>Supported Software</b>	GP-Pro EX Ver. 3.1 or later
<b>Certifications</b>	CE, CSA, UL, RoHS



## Product Specifications

<b>Part Number to Order</b>	<b>PFXZCCEUSG1</b>
<b>External Dimension</b>	W 122 x H54 x D 28mm (W 4.80 x H 2.13 x D 1.10in)
<b>Weight</b>	110g (0.24lb) or less
<b>Number of Switches</b>	5 illuminated switches
<b>Durability of Switches</b>	1 million times or more for each switch
<b>LED Colors</b>	Red, Green, Yellow, Blue, White, Orange
<b>Function Key Lables</b>	Printable and replaceable insert labels
<b>USB Cable Length</b>	1m (removable)
<b>Connection</b>	USB I/F: Type B (socket), USB 2.0 Full Speed
<b>Connectable HMI</b>	GP4000, GP4000M, WinGP, LT4000M, SP5000



Type A



\*When using the unit with GP4000M, it is necessary to use self power USB HUB.

USB 2.0\*



# Numpad

Programmable alphanumeric keypad easily connected with HMI via USB

## General Specifications

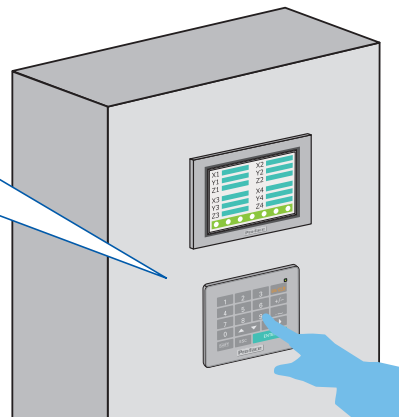
<b>Rated Input Voltage</b>	5 Vdc (powered from USB bus)
<b>Input Voltage Limits</b>	4.75 to 5.25 Vdc
<b>Power Consumption</b>	.75 W or less
<b>Surrounding Air Temperature</b>	0 to 55° C (32 to 131° F)
<b>Storage Temperature</b>	-20 to 60° C (-4 to 140° F)
<b>Environmental Ratings</b>	IP65 UL50E TYPE 4X (Indoor Use Only)
<b>Supported Software</b>	GP-Pro EX Ver. 3.6 or later
<b>Certifications</b>	CE, CSA, UL, C-tick, KC, Gost-R, RoHS



## Product Specifications

<b>Part Number to Order</b>	<b>PFXZCCEUKB1</b>
<b>External Dimension</b>	W 97.6 x H 80.0 x D 31.5 mm (W 3.84 x H 3.15 x D 1.24 in.)
<b>Weight</b>	150 g (0.33 lb) or less
<b>Function Key Label</b>	Printable and replaceable insert labels
<b>USB Cable Length</b>	1m (Removable) *Max 5m with extension cable
<b>Connection</b>	Type miniB (socket), USB 2.0 Full Speed
<b>Connectable HMI</b>	GP4000, GP4000M, WinGP, LT4000M, SP5000

Compare data during input operation to reduce mistakes.



# Tower Light

Tower light unit easily connected with HMI via USB

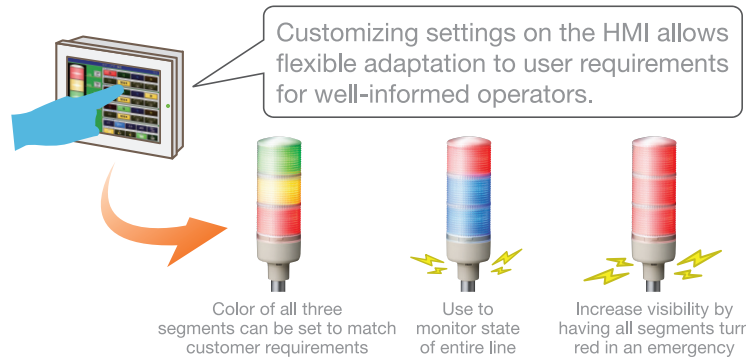
## General Specifications

<b>Rated Input Voltage</b>	5 Vdc (powered from USB bus)
<b>Connection</b>	Type miniB (socket), USB 2.0 Full Speed
<b>Power Consumption</b>	2.0W max
<b>Storage Temperature</b>	-35 to 70° C (-95 to 158° F)
<b>Ambient Operating Temp</b>	0 to 55° C (32 to 131° F)
<b>Environmental Ratings</b>	IP54
<b>Supported Software</b>	GP-Pro EX Ver. 3.1 or later
<b>Certifications</b>	UL 508, cUL, CSA22.2, CE



## Product Specifications

Part Number to Order	<b>PFXZCETWHA1</b>	<b>PFXZCETWW1</b>
<b>Supported Software</b>	GP-Pro EX Ver. 3.0.1 or later	GP-Pro EX Ver. 3.0.1 or later
<b>Connectable HMI</b>	GP4000, GP4000M, WinGP, LT4000M, SP5000	GP4000, GP4000M, WinGP, LT4000M, SP5000
<b>Installation</b>	Tube mounting with fixing plate	Base mounting
<b>Units</b>	3	3
<b>Color</b>	Red / Green / Blue / Yellow	Red / Green / Blue / Yellow
<b>Light Mode</b>	Off / On / Blink (High) / Blink (Low)	Off / On / Blink (High) / Blink (Low)
<b>Buzzer</b>	4 sounds	4 sounds
<b>Buzzer Volume</b>	High / Middle / Low - 85dB	High / Middle / Low - 82dB
<b>Buzzer Tone</b>	High / Low	High / Low
<b>Weight</b>	0.3kg (0.66lb)	0.3kg (0.66lb)



# LAN Adapter

Tower light unit easily connected with HMI via USB

## General Specifications

<b>Rated Input Voltage</b>	5 Vdc (powered from USB bus)
<b>Connection</b>	USB Type A
<b>Power Consumption</b>	0.63 W or less
<b>Storage Temperature</b>	-20 to 60° C (-4 to 140° F)
<b>Ambient Operating Temp</b>	0 to 55° C (32 to 131° F)
<b>Environmental Ratings</b>	IEC/EN 61131-2 compliant
<b>Supported Software</b>	GP-Pro EX Ver. 4.08 or later



## Product Specifications

<b>Part Number to Order</b>	<b>PFXZCGEUUE1</b>
<b>Supported Software</b>	GP-Pro EX Ver. 4.08 or later
<b>Connectable HMI</b>	GP4000 Series
<b>Ethernet I/F</b>	Modular Jack (RJ-45), IEEE802.3i/IEEE802.3u, 10BASE-T/100BASE-TX
<b>USB I/F</b>	Type A (plug), USB 2.0 High-Speed (480Mbps)
<b>External Dimensions</b>	W105 x H40 x D27 mm (W4.13 x H1.57 x D1.06 in.)
<b>Cable Length</b>	0.5 m (1.64 ft), including connections
<b>Weight</b>	100 g (0.22 lb)



# SP5000 Enhanced HMI



## Description

Pro-face has created a new market with the new SP5000 Series interface terminal—or Smart Portal—a new category of HMI, to improve production efficiency by better leveraging the big data generated at production work sites and offices.

The new SP5000 Series interface terminal has been developed to respond to the need to obtain data and supply it where required in an appropriate format for efficiency improvements and the need safely network production work sites with offices.

Until now, networking existing production worksite facilities with an office has necessitated the introduction of large-scale systems and the upgrading of facilities. By introducing the Smart Portal to the production work site, information such as production results and machine data, and production management data required in the office can be made smart at low cost. With the release of the SP5000 Series, Pro-face hopes to create a new Smart Portal market, which it forecasts to reach the same scale as the current HMI market within the next five years.

## Features

- 16-million-color TFT LCD multi-touch panel
- Modular design and screwless box module attachment for improved maintainability when repairing or replacing.
- Available in 12 configurations — 6 display module models and 2 box module models
- Supports applications that run on Windows
- Equipped with two Ethernet ports standard
- Equipped with two standard SIO ports and up to three USB ports
- By using together with Pro-face Remote HMI, it is possible to check and operate machinery from mobile devices such as smartphones and tablets
- Compliant with various international safety standards and IP65F/IP66F/IP67F for use in a broad range of situations

# Premium Display – SP5000

Smart Portal analog touch panel display module

## General Specifications

<b>Backlight</b>	White LED
<b>Storage Temperature</b>	-20 to 60° C [-4 to 140° F]
<b>Ambient Operating Temp</b>	0 to 60° C [32 to 140° F]
<b>Environmental Ratings</b>	w/ a factory-installed front USB cover: IP65, w/ a front USB cover as an option: IP66F, IP67F TYPE 4X/13
<b>Certifications</b>	CE, UL508, RoHS, ATEX, CCS, BV, RINA



## Product Specifications

Part Number to Order	<b>PFXSP5500TPD</b> <b>PFXSP5500TPDFOC*</b>	<b>PFXSP5600TPDC</b> <b>PFXSP5600TPDFOC*</b>	<b>PFXSP5660TPD</b> <b>PFXSP5660TPDFOC*</b>	<b>PFXSP5700TPD</b> <b>PFXSP5700TPDFOC*</b>
<b>Display Type and Size</b>	10.4" TFT Color LCD	12.1" TFT Color LCD	12.1" TFT Color LCD	15" TFT Color LCD
<b>Display Colors</b>	16 million colors	16 million colors	16 million colors	16 million colors
<b>Graphic Display Resolution</b>	800 x 600 pixels (SVGA)	1,024 x 768 pixels (XGA)	1,024 x 768 pixels (XGA)	1,024 x 768 pixels (XGA)
<b>Display Area</b>	W211.2 x H58.4mm [W8.31 x H6.24in]	W245.76 x H184.32mm [W9.68 x H7.26in]	W245.76 x H184.32mm [W9.68 x H7.26in]	W304.1 x H228.1mm [W11.97 x H8.98]
<b>Touch Panel Type</b>	Resistive Film (analog, multi-touch)			
<b>Brightness/Contrast</b>	0 to 100			
<b>Programming Memory</b>	64MB (CFast card)			
<b>Backup Memory</b>	NVRAM 320 KB			
<b>Ethernet</b>	n/a	n/a	Wireless	n/a
<b>USB (1)</b>	USB 2.0 (Type-A)			
<b>USB (2)</b>	USB 2.0 (mini-B)			
<b>Input Voltage</b>	12 to 24 Vdc			
<b>Power Consumption</b>	50W max	56W max	58W max	57W max

\* Product is conformal coated

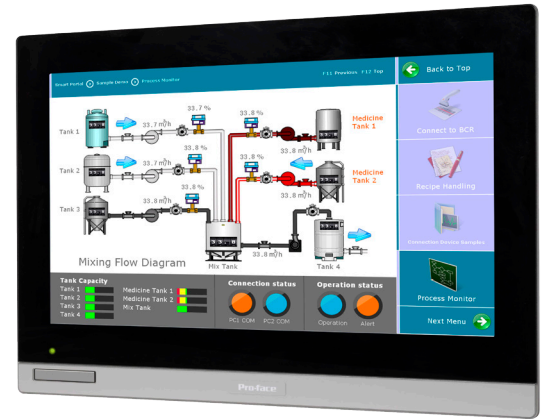


# Premium XL Display – SP5000

Smart Portal analog touch panel display module

## General Specifications

<b>Backlight</b>	White LED
<b>Storage Temperature</b>	-20 to 60° C [-4 to 140° F]
<b>Ambient Operating Temp</b>	0 to 55° C [32 to 131° F]
<b>Environmental Ratings</b>	w/ a factory-installed front USB cover: IP65, IP67F, Type 1 w/ a front USB cover as an option: IP66F, IP67F, Type 1, Type 4X (Indoor Use Only)/13
<b>Certifications</b>	CE, RoHS, GOST-R, UL/c-UL Class 1 Div 2, KC



## Product Specifications

Part Number to Order	PFXSP5700WC	PFXSP5800WC
<b>Display Type and Size</b>	15.6" TFT Color LCD	18.5" TFT Color LCD
<b>Display Colors</b>	16 million colors	
<b>Graphic Display Resolution</b>	1,366 x 768 pixels (FWXGA)	
<b>Display Area</b>	W 344.2 x H 193.5mm	W 409.8 x H 230.4mm
<b>Touch Panel Type</b>	Projected Capacitive (multi-touch, 5 points)	
<b>Brightness/Contrast</b>	0 to 100 (adjusted with touch panel or software)	
<b>Programming Memory</b>	64MB (SD card)	
<b>Backup Memory</b>	NVRAM 320 KB	
<b>Ethernet</b>	IEEE802.3i/IEEE802.3u/IEEE802.3ab, 10BASE-T/100BASE-TX/1000BASE-T	
<b>USB (1)</b>	USB 2.0 (Type-A) x 1	
<b>USB (2)</b>	USB 2.0 (mini-B) x 1	
<b>Input Voltage</b>	12 to 24 Vdc	
<b>Power Consumption</b>	42W max	44W max

# Advanced Display – SP5000

Smart Portal analog touch panel display module

## General Specifications

<b>Backlight</b>	White LED
<b>Storage Temperature</b>	-20 to 60° C [-4 to 140° F]
<b>Ambient Operating Temp</b>	0 to 60° C [32 to 140° F]
<b>Environmental Ratings</b>	IP66F, IP67F, TYPE 4X/13
<b>Certifications</b>	CE, UL508, RoHS, ATEX, CCS, BV, RINA



## Product Specifications

Part Number to Order	<b>PFXSP5400WAD</b> <b>PFXSP5400WADF0C*</b>	<b>PFXSP5500WAD</b> <b>PFXSP5500WADF0C*</b>	<b>PFXSP5600WAD</b> <b>PFXSP5600WADF0C*</b>
<b>Display Type and Size</b>	7" TFT Color LCD	10.1" TFT Color LCD	12.1" TFT Color LCD
<b>Display Colors</b>	262,144 colors	262,144 colors	262,144 colors
<b>Graphic Display Resolution</b>	800 x 480 pixels (WVGA)	1,200 x 800 pixels (WXGA)	1,200 x 800 pixels (WXGA)
<b>Display Area</b>	W154.08 x H95.92mm [W6.06 x H3.78in]	W216.96 x H135.6mm [W8.54 x H5.34in]	W261.12 x H163.2mm [W10.28 x H6.43in]
<b>Touch Panel Type</b>	Resistive Film (analog, multi-touch)		
<b>Brightness/Contrast</b>	0 to 100		
<b>Programming Memory</b>	64MB (CFast card)		
<b>Backup Memory</b>	NVRAM 320 KB		
<b>Input Voltage</b>	12 to 24 Vdc		
<b>Power Consumption</b>	41W max	43W max	45W max

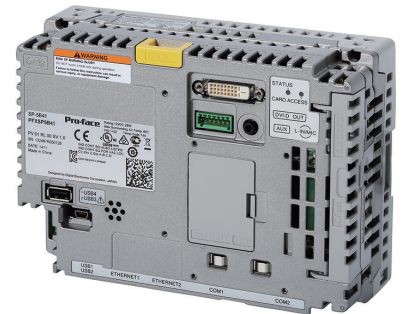
\* Product is conformal coated

# Open Box – SP5000

Smart Portal analog touch panel box module

## General Specifications

<b>CPU</b>	Intel Atom Processor E3825 1.3GHZ Dual core/Dual thread
<b>Main Memory</b>	DDR3L SDRAM 2 GB
<b>Application Memory</b>	64 MB - Free space about 17 GB
<b>Backup Memory</b>	NVRAM 320 KB
<b>Storage Temperature</b>	-20 to 60° C [-4 to 140° F]
<b>Ambient Operating Temp</b>	0 to 60° C [32 to 140° F]
<b>Certifications</b>	CE, UL508, RoHS, ATEX, CCS, BV, RINA



## Product Specifications

Part Number to Order	PFXSP5B41	PFXSP5B41-S8A
<b>BLUE Open Studio trial pre-installed</b>	No	Yes
<b>Power Consumption</b>	25W max	
<b>SD Card</b>	SD Card Slot (Storage) x 1	
<b>Cfast Card</b>	CFast Card Slot (System) x 1, CFast Card Slot (Storage) x 1	
<b>Serial Ports (COM1)</b>	RS-232C / 422 / 485	
<b>Serial Ports (COM2)</b>	RS-232C / 422 / 485	
<b>Ethernet</b>	x2	
<b>USB (1)</b>	USB 2.0 (Type-A)	
<b>USB (2)</b>	USB 2.0 (Type-A)	
<b>USB (3)</b>	USB 2.0 (Type-A)	
<b>USB (4)</b>	USB 2.0 (mini-B)	
<b>Sound Output</b>	Speaker output 300mW (rated load: 8ohm, Frequency: 1kHz)	
<b>Sound Input</b>	MIC or LINE input (software switch), Connector: MINI-JACK dia 3.5mm	
<b>Video Output Interface</b>	DVI-D 24 pin (socket)	

# Power Box – SP5000

Smart Portal analog touch panel box module

## General Specifications

**Storage Temperature** -20 to 60° C [-4 to 140° F]  
**Ambient Operating Temp** 0 to 60° C [32 to 140° F]  
**Certifications** CE, UL508, RoHS, ATEX, CCS, BV, RINA



## Product Specifications

**Part Number to Order** **PFXSP5B10**  
**PFXSP5B10FOC\***

<b>SD Card</b>	2 slots
<b>Serial Ports (COM1)</b>	RS-232C / 422 / 485
<b>Serial Ports (COM2)</b>	RS-232C / 422 / 485
<b>Ethernet</b>	x2
<b>USB (1)</b>	USB 2.0 (Type-A)
<b>USB (2)</b>	USB 2.0 (Type-A)
<b>USB (3)</b>	USB 2.0 (mini-B)
<b>Sound Output</b>	Speaker output 300mW (rated load: 8ohm, Frequency: 1kHz)
<b>Sound Input</b>	n/a
<b>Video Output Interface</b>	n/a
<b>AUX Input</b>	n/a
<b>AUX Output</b>	Alarm Output / Buzzer Output

\* FOC suffix denotes product is conformal coated

# Multi-Converter – SP5000

SP5000 multi-equipment data-collecting device

## General Specifications

**Storage Temperature** -20 to 60° C [-4 to 140° F]  
**Ambient Operating Temp** 0 to 60° C [32 to 140° F]  
**Certifications** CE, UL508, RoHS, ATEX, CCS, BV, RINA



## Product Specifications

<b>Part Number to Order</b>	<b>PFXZCDAEXP1</b>
<b>Ethernet</b>	x1 (10BASEET/100BASE-TX)
<b>Input Voltage</b>	10.8–28.8 VDC
<b>Power Consumption</b>	2.0W or less (37W or less w/ Box module)
<b>Voltage Endurance</b>	1,000 VAC, 20 mA for 1 minute
<b>Insulation Resistance</b>	500 VDC, 10 MΩ or more
<b>Vibration Resistance</b>	IEC/EN 61131-2 compliant 5–9 Hz Single amplitude 3.5 mm (0.14in) 9–150 Hz Fixed acceleration: 9.8 m/s <sup>2</sup> X, Y, Z directions for 10 cycles (appx 100 minutes)
<b>Shock Resistance</b>	IEC/EN 61131-2 compliant 147 m/s <sup>2</sup> , X, Y, Z directions for 3 times
<b>Noise Immunity</b>	Noise voltage: 1,000 Vp-p Pulse duration: 1 μs Rise time: 1 ns (via noise simulator)
<b>Grounding</b>	n/a
<b>External Dimensions</b>	W189 x H134 x D36 mm [7.44 x 5.28 x 1.42]
<b>Weight</b>	.75 kg (1.65lb) or less

## HMI Accessories

Cables, Modules, Adapters,  
Storage Media, Fasteners, Gaskets

## Cables / Adapters

**AGP3000H-ADPCOM-01** Conversion Adapter for interfacing with a GP3000H Cable Connector and External Output terminal block.”

**CA3-CBL232/5M-01** Cable for RS-232C connection between various hosts and the GP4000 (5m)

**CA3-ADPCOM-01** COM 1 Pin conversion adapter on the GP3000

**CA3-ADPSEI-01** Adapter for SIEMENS MPI when using Profibus connector and cabling w/ AGP3000.

**CA3-ADPTRM-01** Connects output from a GP unit's Serial Interface (D-sub 9 pin socket) directly with an RS-422 terminal block.

**CA3-CBL422-01** Cable for RS-422 connection between various hosts and the GP4000 (Plug Type) (5m)

**CA3-CBL422/5M-01** Cable for RS-422 connection between various hosts and the GP4000 (Socket Type) (5m)

**CA3-CBLA-01** Cable for directly connecting an A Series CPU (5m)

**CA3-CBLCBT232-01** Cable for converting a D-Sub 9-pin plug to a D-Sub 25-pin socket (20cm)

**CA3-CBLCBT422-01** Connects a standard RS-422 cable (GP Connector,D-Sub 25-pin) to the GP (20cm)

**CA3-CBLFX/1M-01** Cable for directly connecting an FX Series CPU (1m)

**CA3-CBLFX/5M-01** Cable for directly connecting an FX Series CPU (5m)

**CA3-CBLLNKMQ-01** Cable for directly connecting a Q Series Link Unit (5m)

**CA3-CBLMLT-01** Connects a host controller to the GP for multi-link(n:1) communication

**CA3-CBLQ-01** Cable for directly connecting a Q Series CPU (5m)

**CA3-CBLSYS-01** Cable for directly connecting a SYSMAC Link Unit (5m)

**CA3-ISO232-01** Unit for connecting various hosts and the GP4000 by insulating

**CA3-ISO485-01** Unit for connecting various hosts and the GP3000 by insulating

**CA3-MDCB11** Cable for connecting a 2-port adapter to the GP3000 (5m)

**CA3-MPI-PG1-PFE** Connects a host controller to the GP for MPI communication.

**CA3-MPI-PGN-PFE** Connects a host controller to the GP for MPI communication.

**CA4-ADPONL-01** For COM 2 Termination adapter required for communication through the RS-422/485 connection

## HMI Accessories

Cables, Modules, Adapters,  
Storage Media, Fasteners, Gaskets

## Cables / Adapters

<b>CA6-CBLTTY/5M-01</b>	Cable for connecting a PLC S5 series to the GP (5m)
<b>CA7-CBLCVRGB-01</b>	For converting DVI-A to RGB
<b>CA9-USBAMB/5M-01</b>	USB cable for RGB Input Unit touch panel operation (Host-Slave: Mini-B) (5m)
<b>FN-CABLE2050-31-MS</b>	Connects GP3000 units to the Flex Network modules
<b>FN-CABLE2200-31-MS</b>	Connects GP3000 units to the Flex Network modules
<b>FP-CV02-45</b>	For outputing image signal from host to GP (4.5m)
<b>FP-DV01-100</b>	For outputing image signal from host to GP (10m)
<b>FP-DV01-50</b>	For outputing image signal from host to GP (5m)
<b>GP070-MD11</b>	Interface unit required for simultaneous use of A/QnA/FX Series peripheral devices
<b>GP2000H-AP232</b>	Conversion adapter to connect GP operation data to RS-232C D-Sub and power/DIO terminals.
<b>GP2000H-AP422</b>	Conversion adapter to connect GP operation data to RS-422 and power/DIO terminals.
<b>GP3000-MPI21-PFE</b>	Connects a host controller to the GP for MPI communication (Online adapter is included in the package)
<b>GP3000-MPI21-PFE</b>	Connects a Siemens S7-200 CPU215+, S7-300, S7-400 (3.5m)
<b>GP3000H-CBLH-10M</b>	Heavy-duty type interface cable for communication between the GP and external equipment
<b>GP3000H-CBLHD-10M</b>	Heavy-duty type cable between the GP4000H Conversion Adapter and the GP4000H.
<b>GP3000H-CBLS-10M</b>	Standard type interface cable for communication between the GP and external equipment
<b>GP3000H-CBLS-3M</b>	Standard type interface cable for communication between the GP and external equipment
<b>GP3000H-CBLS-5M</b>	Standard type interface cable for communication between the GP and external equipment
<b>GP3000H-CBLSD-10M</b>	Standard type cable between the GP4000H Conversion Adapter and the GP4000H.
<b>GP3000H-CBLSD-3M</b>	Standard type cable between the GP4000H Conversion Adapter and the GP4000H.
<b>GP3000H-CBLSD-5M</b>	Standard type cable between the GP4000H Conversion Adapter and the GP4000H.

## HMI Accessories

Cables, Modules, Adapters,  
Storage Media, Fasteners, Gaskets

## Cables / Adapters

<b>GP3000H-CBLS232-10M</b>	The cable between the GP2000H Series RS-232C Conversion Adapter and the GP4000H
<b>GP3000H-CBLS232-3M</b>	The cable between the GP2000H Series RS-232C Conversion Adapter and the GP4000H
<b>GP3000H-CBLS422-10M</b>	The cable between the GP2000H Series RS-422 Conversion Adapter and the GP4000H
<b>GP3000H-CBLS422-3M</b>	The cable between the GP2000H Series RS-422 Conversion Adapter and the GP4000H
<b>HMI-CAB-ST52</b>	RS-232C Cable provides direct connection to Allen-Bradley SLC5/03, 5/04, Contrologix, & Compactlogix PLCs (12ft)
<b>HMI-CAB-ST52-30X</b>	RS-232C Cable provides direct connection to Allen-Bradley SLC5/03, 5/04, Contrologix, & Compactlogix PLCs (30ft)
<b>HMI-CAB-ST52-50X</b>	RS-232C Cable provides direct connection to Allen-Bradley SLC5/03, 5/04, Contrologix, & Compactlogix PLCs (50ft)
<b>PFXZCBADTM1</b>	Connects output from a GP unit's Serial Interface (D-sub 9 pin plug) directly with an RS-422 terminal block.
<b>PFXZCBCBCVR41</b>	Cable for converting a D-Sub 9-pin plug to a D-Sub 25-pin socket (20cm)
<b>PFXZCBCBMD1</b>	Connects Mitsubishi PLC directly to the GP4000 (D-sub 9 pin plug) using 2 port adapter II (RS-422) (5m)
<b>PFXZCBCBML1</b>	Connects a host controller directly to the GP4000 (D-sub 9 pin plug) for multi-link (n:1) communication.
<b>PFXZLMCBRJR21</b>	Cable with loose wires at one end for RS-232C connection between various hosts and the LT (5m)
<b>PFXZLMCBRJR81</b>	Cable with loose wires at one end for RS-485 connection between various hosts and the LT (5m)
<b>PFXZSPADWM1</b>	Wall mount adapter for Multi-Converter (Multi-Data Box)
<b>PFXZXMADSM31</b>	Cable with hook to install a rear module on a DIN rail while connecting rear module to a separated display module (3m)
<b>PFXZXMADSM51</b>	Cable with hook to install a rear module on a DIN rail while connecting rear module to a separated display module (5m)
<b>ST03-A2B-MPI21-PFE</b>	Connects a host controller to the GP for MPI communication.
<b>ZC9CBA51</b>	Connects the GP directly to the CPU programming port on the Mitsubishi Electric PLC A/ QnA series (5m)
<b>ZC9CBFP21</b>	Connects the GP directly to the CPU port on the Panasonic Electric Works PLC FP series (2m)
<b>ZC9CBFX11</b>	Connect the GP directly to the CPU programming port on the Mitsubishi Electric PLC FX series (1m)
<b>ZC9CBFX51</b>	Connect the GP directly to the CPU programming port on the Mitsubishi Electric PLC FX series (5m)
<b>ZC9CBQ31</b>	Connects the GP directly to the CPU programming port on the Mitsubishi Electric PLC Q series (3m)



# HMI Accessories

Cables, Modules, Adapters,  
Storage Media, Fasteners, Gaskets

Modules / Expansion / FLEX

<b>EXM-DDI8DT</b>	8-point sink-source shared type expansion unit
<b>EXM-DDI16DT</b>	16-point sink-source shared type expansion unit
<b>CA5-PFSALL/EX-01</b>	Expansion unit enables GP in the PROFIBUS network and communication with the PROFIBUS DP master
<b>CA6-DNSALL/EX-01</b>	Expansion unit enables GP in the DeviceNet network and communication with the DeviceNet master
<b>CA7-CCLALL/EX-01</b>	Expansion unit enables GP in the CC-Link network and communication with the CC-Link master
<b>CA8-CANLT-01</b>	Master unit to connect to a slave unit supporting CANopen
<b>CA9-CANALL/EX-01</b>	Expansion unit enables GP in the CANopen network and communication with the CANopen master
<b>EXM-ALM3LT</b>	2-ch analog input/ 1-ch analog output type expansion unit
<b>EXM-AMI2HT</b>	2-ch analog input type expansion unit
<b>EXM-AMI4LT</b>	4-ch Voltage, Current, Temperature Expansion Unit
<b>EXM-AMM3HT</b>	2-ch analog input/ 1-ch analog output type expansion unit
<b>EXM-AMM6HT</b>	4-ch analog input/ 2-ch analog output expansion unit
<b>EXM-AM01HT</b>	1-ch analog output type expansion unit
<b>EXM-ARI8LT</b>	8-ch temperature input type expansion unit
<b>EXM-AV02HT</b>	2-ch analog output type expansion unit
<b>EXM-DD016TK</b>	16-point transistor output source type expansion unit
<b>EXM-DD016UK</b>	16-point transistor output sink type expansion unit
<b>EXM-DD08TT</b>	8-point transistor output source type expansion unit
<b>EXM-DD08UT</b>	8-point transistor output sink type expansion unit
<b>EXM-DMM24DRF</b>	16-point input sink-source/ 8-point relay output mixed I/O type expansion unit
<b>EXM-DMM8DRT</b>	4-point input sink-source and 4-point relay output type expansion unit (1 common) mixed I/O unit
<b>EXM-DRA16RT</b>	16-point relay output (2 common) type expansion unit

## HMI Accessories

Cables, Modules, Adapters,  
Storage Media, Fasteners, Gaskets

## Modules / Expansion / FLEX

<b>EXM-DRA8RT</b>	8-point relay output (2 common) type expansion unit
<b>FN-AD02AH41</b>	Converts 2-channel analog signals to digital signals
<b>FN-DA02AH41</b>	Converts 2-channel 12-bit digital signals to analog signals and outputs the result
<b>FN-X32TS41</b>	I/O unit of 32-point input sink/source sharing type
<b>FN-XY16SC41</b>	Input/output combination I/O unit of 16-point input sink/source and 16-point transistor output Source type
<b>FN-XY16SK41</b>	Input/output combination I/O unit of 16-point input sink/source and 16-point transistor output Sink type
<b>FN-XY32SKS41</b>	Input/output combination I/O unit of 32-point input sink/source and 32-point transistor output Sink type
<b>GP3000-DVI01</b>	For inputting DVI to GP
<b>GP3000-VM01</b>	Video-Mix Unit (262,000 colors, Video Input x 4ch, DVI Input x 1ch, DVI Output x 1ch, VGA/SVGA/XGA)
<b>HTB1C0DM9LP</b>	Slave unit supporting CANopen with 12 digital inputs, 6 relay outputs and 2 transistor source outputs.

## Storage/ Misc.

<b>CA3-CFCALL/256MB-01</b>	CF Card (256MB)
<b>CA3-CFCALL/512MB-01</b>	CF Card (512MB)
<b>CA3-DFS12-01</b>	Disposable, dirt-resistant sheet for the GP unit's screen (5 sheets/set)
<b>CA3-DFS15-01</b>	Disposable, dirt-resistant sheet for the GP unit's screen (5 sheets/set)
<b>CA3-DFS6-01</b>	Sheet for protecting the front of the display unit from fingerprints, water droplets, powders, dust, & oil mist (5 pcs/ set)
<b>CA3-USBCB-01</b>	Cable for transferring screen data between a PC (USB Type A) and the GP unit (USB Type A) (2m)
<b>CA4-ATM10-01</b>	Panel cutout adapter for mounting 10.4-inch GP in cutout for GP-2500/2600 series.
<b>CA4-ATM5-01</b>	Panel cutout adapter for mounting a 5.7-inch display unit in cutout for LT Series (Type A/B/B+/C/H) and GP-37W2B
<b>CA5-DFS10-01</b>	Disposable, dirt-resistant sheet for the GP unit's screen (5 sheets/set)
<b>CA5-USBATM-01</b>	USB Cable clamp for 1 port products to prevent disconnection.

## HMI Accessories

Cables, Modules, Adapters,  
Storage Media, Fasteners, Gaskets

Storage / Misc.

<b>CA5-USBEXT-01</b>	Extension cable for attaching to USB port on front panel (1m)
<b>CA6-CFCALL/1GB-01</b>	CF Card (1GB)
<b>CA6-DFS4-01</b>	Disposable, dirt-resistant sheet for the GP unit screen (5 sheets/set)
<b>CA6-USB232-01</b>	Cable for converting a GP unit's USB interface into a serial interface (RS-232C). (50cm)
<b>CA7-DFS12-01</b>	Disposable, dirt-resistant sheet for the GP unit screen (5 sheets/set)
<b>CA7-TPPEN/ALL-01</b>	5 touch pens for screen operation.
<b>CA8-CFCALL/2GB-01</b>	CF Card (2GB)
<b>CA8-USBATALL-01</b>	USB Cable clamp for 1 port products to prevent disconnection.
<b>CA9-USBATRGB/MB-01</b>	Disconnection prevention clamp for the RGB Input USB (miniB) Cable (2 pcs/set)
<b>FP-US00</b>	Connects a USB printer (TYPE-B) (5m)
<b>GP077-CFAD10</b>	Used for read/write of CF Card data via a PC's PCMCIA slot.
<b>GP077-SDAD10</b>	Adapter for converting the audio output section to the AUX connector to a pin jack
<b>GP2000H-STRAP11</b>	Strap for wearing over the neck.
<b>GP3000-EXDM01</b>	Memory used for expanding GP-Pro EX alarm and character table functions
<b>GP3000H-DFS6-01</b>	Disposable, dirt-resistant sheet for the GP unit's screen. (5 sheets/set) (Hard type)
<b>GP3000H-WMA-01</b>	Bracket for mounting the GP3000H Series unit to a commercially available arm or panel.
<b>HMI-CAB-ETH</b>	Directly connect via Ethernet either the PC to the HMI for programming or the HMI to the PLC for communications (5m)
<b>HMI-CAB-ST001</b>	Connects DB9 COM port with 9 open ended wires for connecting to 3rd party screw terminal devices (5m)
<b>PFXZCBCBCVUSR41</b>	Cable for connecting a GP unit (USB Type A) with an external device (RS-422/RS-485)
<b>PFXZCBDS101</b>	Disposable, dirt-resistant sheet for the GP unit screen (5 sheets/set)
<b>PFXZCBDS61</b>	Disposable, dirt-resistant sheet for the GP unit screen (5 sheets/set)
<b>PFXZCBDS71</b>	Disposable, dirt-resistant sheet for the GP unit screen (5 sheets/set)

## HMI Accessories

Cables, Modules, Adapters,  
Storage Media, Fasteners, Gaskets

Storage / Misc.

<b>PFXZCBDS72</b>	Disposable, dirt-resistant sheet for the GP unit screen (5 sheets/set)
<b>PFXZCBOP101</b>	Disposable, environmental resistant cover for 10.4 inch (1 sheet/set)
<b>PFXZCBOP121</b>	Disposable, environmental resistant cover for 12.1 inch (1 sheet/set)
<b>PFXZCBOP41</b>	Disposable, environmental resistant cover for 3.5 inch (1 sheet/set)
<b>PFXZCBOP61</b>	Disposable, environmental resistant cover for 5.7 inch (1 sheet/set)
<b>PFXZCBOP71</b>	Disposable, environmental resistant cover for 7.0/7.5 inch (1 sheet/set)
<b>PFXZCBSD4GC41</b>	SD Memory Card (4 GB, CLASS4)
<b>PFXZCDAT72</b>	Panel cutout adapter for mounting 7-inch Wide Advanced Display in cutout for GP-2400, GP-3400, and GP-4400 Series.
<b>PFXZCDCNAUX1</b>	AUX connector required in case an external output is used (5 pcs/set)
<b>PFXZCDCVUS1</b>	Front USB cover with fixing screw, corresponding to IP66f, IP67f, Type 1/4X. Indoor use only. (5 pieces/set)
<b>PFXZCDDS102</b>	Disposable, dirt-resistant sheet for the display (5 sheets/set)
<b>PFXZCDDS122</b>	Disposable, dirt-resistant sheet for the display (5 sheets/set)
<b>PFXZCDSCCFA321</b>	CFast Card (32 GB, SLC)
<b>PFXZGPFSR10W1</b>	Overlay (Front Sheet) for Flat mount of GP4000 Rear Mount model (Color: White, 1 piece)
<b>PFXZGPFSR12W1</b>	Overlay (Front Sheet) for Flat mount of GP4000 Rear Mount model (Color: White, 1 piece)
<b>PFXZGPFSR6W1</b>	Overlay (Front Sheet) for Flat mount of GP4000 Rear Mount model (Color: White, 1 piece)
<b>PFXZGPFSR7W1</b>	Overlay (Front Sheet) for Flat mount of GP4000 Rear Mount model (Color: White, 1 piece)
<b>PS400-DF00</b>	Disposable, dirt-resistant sheet for the GP unit's screen (5 sheets/set)
<b>ZC9DS31</b>	Disposable, dirt-resistant sheet for the GP unit's screen (5 sheets/set)
<b>ZC9USCBMB1</b>	Cable for transferring screen data between a PC (USB Type A) and the GP unit (USB mini- B) (1.8 m)
<b>ZC9USCL1</b>	USB (Type A) Cable clamp for 1 port products to prevent disconnection (5 clamps/ set)
<b>ZC9USEXMB1</b>	Extension cable that attaches to the USB (mini-B) interface on the front side of the operation panel (1m)

# HMI Accessories

Cables, Modules, Adapters,  
Storage Media, Fasteners, Gaskets

## EZ Series

<b>CA5-USBEXT-01</b>	Extension cable attaching USB (Type A) interface to front panel (1m)
<b>PFXZCCA1</b>	Accessories Kit — Anti-rotation Tee, USB cable clamp to prevent disconnection (USB/B, 1 port), (5 pcs/each) Insert Label for EZ Illuminated Switch (3 pieces/sheet)
<b>PFXZCCA1KB1</b>	Accessories Kit — Anti-rotation Tee (5pcs), USB cable clamp to prevent disconnection (USB/mini-B, 1 port, 5pcs) Function Key Label for EZ Numpad (2pcs/sheet)
<b>PFXZCCAT1</b>	2mm spacer to adjust installation panel thickness (for EZ Illuminated Switch), with 22mm circular hole
<b>PFXZCCCVSS1</b>	A protective cover to protect the sensing screen of EZ Fingerprint Recognition Unit (5 pcs/set)
<b>PFXZCCNTSS1</b>	Nut to install EZ Fingerprint Recognition Unit (5 pcs/set)
<b>PFXZCDWGSG1</b>	Provides dust and moisture resistance when EZ Illuminated Switch is installed into a solid panel (1 piece)
<b>PFXZCEATWM1</b>	Attachment mounts the EZ Series Unit on the wall. Please use it when holding the EZ Series in your hands
<b>PFXZGMNT1</b>	Nut for installation to a solid panel (10 pieces/set)
<b>PFXZGMSW1</b>	Socket wrench to tighten and loosen the installation nut (1 piece/set)
<b>XVGUZ02</b>	Cable lock to prevent disconnection of USB cable
<b>ZC9USCBMB1</b>	Cable for connecting from an EZ Tower Light to a Pro-face's interface unit (USB A/mini B) (1.8m)

## HMI Replacement Parts

Cables, Modules, Adapters,  
Storage Media, Fasteners, Gaskets

## Fasteners / Gaskets

<b>CA3-ATFALL-01</b>	Used to install the LT into a solid panel. (4 pcs/ set)
<b>CA3-WPG12-01</b>	Provides dust and moisture resistance when GP is installed into a solid panel
<b>CA3-WPG15-01</b>	Provides dust and moisture resistance when GP is installed into a solid panel
<b>CA3-WPG6-01</b>	Provides dust and moisture resistance when LT is installed into a solid panel
<b>CA3-WPG6-01</b>	Provides dust and moisture resistance when GP is installed into a solid panel
<b>CA5-WPG10-01</b>	Provides dust and moisture resistance when GP is installed into a solid panel
<b>CA5-WPG8-01</b>	Provides dust and moisture resistance when GP is installed into a solid panel
<b>GP3000H-WPGADP-01</b>	Provides dust and moisture resistance when GP3000H Conversion Adapter is installed into a solid panel
<b>PFXZCBAF1</b>	Used to install the GP into a solid panel (4 pieces/ set)
<b>PFXZCBWG101</b>	Provides dust and moisture resistance when GP is installed into a solid panel (1 piece)
<b>PFXZCBWG121</b>	Provides dust and moisture resistance when GP is installed into a solid panel (1 piece)
<b>PFXZCBWG41</b>	Provides dust and moisture resistance when GP is installed into a solid panel (1 piece)
<b>PFXZCBWG61</b>	Provides dust and moisture resistance when GP is installed into a solid panel (1 piece)
<b>PFXZCBWG71</b>	Provides dust and moisture resistance when GP is installed into a solid panel (1 piece)
<b>PFXZCDWG101</b>	Provides dust and moisture resistance when this product is installed into a solid panel (1 piece)
<b>PFXZCDWG102</b>	Provides dust and moisture resistance when this product is installed into a solid panel (1 piece)
<b>PFXZCDWG121</b>	Provides dust and moisture resistance when this product is installed into a solid panel (1 piece)
<b>PFXZCDWG122</b>	Provides dust and moisture resistance when this product is installed into a solid panel (1 piece)
<b>PFXZCDWG151</b>	Provides dust and moisture resistance when this product is installed into a solid panel (1 piece)
<b>PFXZCDWG72</b>	Provides dust and moisture resistance when this product is installed into a solid panel (1 piece)
<b>PFXZGPAFRL1</b>	Used to install the GP4000 Rear Mount model into a solid panel (2 pieces/set)
<b>PFXZGPAFRM1</b>	Used to install the GP4000 Rear Mount model into a solid panel (2 pieces/set)

## HMI Replacement Parts

Cables, Modules, Adapters,  
Storage Media, Fasteners, Gaskets

## Fasteners / Gaskets

<b>PFXZGPWGR1</b>	GP4000 Rear Mount model Installation Gasket (1 piece)
<b>ST400-WP01</b>	Provides dust and moisture resistance when LT is installed into a solid panel
<b>ZC9AF31</b>	Used to install the GP into a solid panel (2 pieces/ set)
<b>ZC9WG31</b>	Provides dust and moisture resistance when GP is installed into a solid panel (1 piece)

## Connectors

<b>CA5-AUXCNALL-01</b>	AUX connector for GP3000 series required in case an external output is used. (5 pcs/set)
<b>CA5-DCCNL-01</b>	Connector to connect power supply cables (5 pcs/set)
<b>CA5-DCCNM-01</b>	Connector for attaching power supply to medium-sized units (5 pcs/set)
<b>CA5-DCCNM-01</b>	Connector to connect power supply cables (5 pcs/set)
<b>CA6-DIOCN4-01</b>	Connector attached to the DIO interface. Connects an external I/O device. (5 pcs/ set)
<b>CA6-DIOCNALL-01</b>	Connector attached to the DIO interface. Connects an external I/O device. (5 pcs/set)
<b>CA6-FNCNALL-01</b>	Connector attached to the FLEX NETWORK interface. Connects a FLEX NETWORK communication cable. (5 pcs/set)
<b>CA7-DIOCN5-01</b>	Connector attached to the DIO interface. Connects an external I/O device. (5 pcs/ set)
<b>GLC-DIOCN03</b>	FN-XY32SK41 Connectors (2 pcs/set)
<b>PFXZCBCNDC1</b>	Connector to connect DC power supply cables (Straight type, 5pcs/set)
<b>PFXZCBCNDC2</b>	Right-angle connector to connect DC power supply cables (Angle type, 5pcs/set)
<b>PFXZGMCNDC1</b>	Connector to connect DC power supply cables (5 pcs/set)
<b>PFXZLMCNIO1</b>	I/O connector 15-pin (2 pcs/set) and I/O connector 6-pin (2 pcs/set)
<b>ZC9CMC1</b>	Connector for Serial I/F (1 piece)
<b>ZCACNDCS1</b>	Connector for attaching power supply to 3.4-inch GP units. (Set of 5 connectors)

## HMI Replacement Parts

Cables, Modules, Adapters,  
Storage Media, Fasteners, Gaskets

Storage / Misc.

<b>CA3-BLU12-01 *4</b>	Replacement backlight for main unit (1 pc.)
<b>CA3-BLU15-01 *3</b>	Replacement backlight for main unit (1 pc.)
<b>CA3-BUSCVR-01</b>	Protects the GP unit's rear face connector. (Large size and small size each in one set)
<b>CA5-BLU10T-01 *5</b>	Replacement backlight for main unit (1 pc.)
<b>CA5-USBATL-01</b>	USB Cable clamp to prevent disconnection (5 pcs/ set)
<b>CA6-BLU10T-02 *5</b>	Replacement backlight for main unit (1 pc.)
<b>CA6-EXMCNHE20P-01</b>	Connector for EX module (5 pcs/ set)
<b>CA6-EXMCNRS10P-01</b>	Connector for EX module (5 pcs/ set)
<b>CA6-EXMCNRS11P-01</b>	Connector for EX module (5 pcs/ set)
<b>CA7-FIXEXM-01</b>	Hook for securing three EX modules.
<b>CA7-HTBCNSET-01</b>	13-pin input connector and 16-pin output connector for HTB (each in one set)
<b>CA7-USBAT-01</b>	USB Cable clamp to prevent disconnection (5 pcs/ set)
<b>GP3000H-DUPS-01</b>	5 sheets/set (x 5) for changing image of the function switches.
<b>GP3000H-EMGD-01</b>	Emergency Switch Guard for preventing accidental operation.
<b>GP3000H-HS-01</b>	Strap for handheld operation.
<b>PFXGM4200TP</b>	For LT4000M/GP4000M Series Display Modular type, 3.5-inch
<b>PFXGM4300TP</b>	For LT4000M/GP4000M Series Display Modular type, 5.7-inch
<b>PFXLM4B01DAC</b>	LT4000M Analog model Rear Module, Source Output, DC24V (Main Unit)
<b>PFXLM4B01DAK</b>	LT4000M Analog model Rear Module, Sink Output, DC24V (Main Unit)
<b>PFXLM4B01DDC</b>	LT4000M DIO model Rear Module, Source Output, DC24V (Main Unit)
<b>PFXLM4B01DDK</b>	LT4000M DIO model Rear Module, Sink Output, DC24V (Main Unit)
<b>PFXZCBBT1</b>	Primary battery for memory and time data backup (1 piece)
<b>PFXZCBCLUSA1</b>	Clamp to prevent disconnection of USB cable (1 port, 5 pcs/set)



# HMI Replacement Parts

Cables, Modules, Adapters,  
Storage Media, Fasteners, Gaskets

## Storage / Misc.

<b>PFXZCDSCCFA162</b>	CFAST Card (16 GB, MLC) for System Card
<b>PFXZCDSD1GC61</b>	SD Memory Card (1 GB, SLC, Class 6) for System Card
<b>PFXZGMAK1</b>	Accessories Kit — Anti-rotation Tee, USB cable clamp to prevent disconnection (USB Type A, Mini B, for 1 port), 2mm-high spacer to adjust installation panel thickness (1pc/each)
<b>PFXZGMNT1</b>	Nut to install the display module (10 pcs/set)
<b>PFXZGMSW1</b>	Socket wrench to tighten and loosen the display installation nut (1 pc/set)
<b>PFXZXMADSA1</b>	DIN rail installation adapter for rear modules in non-display operation
<b>PS501S-BU00</b>	Replacement backlight for main unit (2 pcs/set)
<b>ZC9USCLMB1</b>	Clamp to prevent disconnection of USB cable (1 port, 5 pcs/set)

## EZ Series

<b>PFXZCDWGS1</b>	Provides dust and moisture resistance when EZ Illuminated Switch is installed into a solid panel (1 piece)
<b>PFXZGMNT1</b>	Nut for installation to a solid panel (10 pieces/set)
<b>PFXZGMSW1</b>	Socket wrench to tighten and loosen the installation nut (1 piece/set)
<b>XVGUZ02</b>	Cable lock to prevent disconnection of USB cable

## PE4000B Node Box



### Description

The PE4000B is an industrial computer that can be embedded in data loggers, low-voltage power supply systems, and other equipment on the production work site. Compared to previous embedded industrial computers developed and manufactured by Pro-face, the new product is 60% smaller by volume and 38% lighter by weight.

The PE4000B Series industrial computer is equipped with up to six serial ports and three Ethernet ports, and responds to the need for peace-of-mind when used in conjunction with a data logger for data collection. It can also be used with automatic guided vehicles (AGVs), picking carts, and similar equipment powered by 12 to 24 V batteries.

The new PE4000B Series industrial computer can be combined with Pro-face's remote application software, Pro-face Remote HMI to enable remote confirmation and operation via a tablet or similar device. By supporting remote confirmation and operation, the need for a permanent monitor for embedded industrial computers can be eliminated, allowing the operator to check and operate machinery at any time using a tablet or smartphone.

### Features

- Check real time production data, and check battery or location with Pro-face mobility solutions for remote access
- Highly compact design and mountable via DIN rail or directly, allowing freedom of product placement and convenient installation
- No moving/rotating parts such as fan or HDD
- Energy efficient design with low heat emission
- Available with either a 9 to 36 VDC or 12 to 24 VDC power supply in a total of six models
- Equipped with up to six serial ports, three Ethernet ports, five USB ports, and eight digital I/O ports
- CF/CFast card compatible with embedded OS and SSD for use in environments with a lot of vibration

## Atom N2600 – PE4000B

## Fanless Industrial PC

## General Specifications

<b>Models</b>	PE4000B
<b>CPU</b>	Intel Atom Dual Core N2600 1.6 GHz
<b>Rated Input Voltage</b>	12 to 24 Vdc $\pm 5\%$
<b>Power Consumption</b>	16 W (Typically)
<b>External Dimensions</b>	264.5 x 69.19 x 133 mm (10.41 x 2.72 x 5.24 in.)
<b>Storage Temperature</b>	-40 to 85 °C (-40 to 185 °F)
<b>Ambient Operating Temp</b>	w/ air flow: 0 to 60 °C (32 to 140 °F) w/o airflow: 0 to 50 °C (32 to 122 °F)
<b>Environmental Ratings</b>	IP40
<b>Certifications</b>	CE, UL UL60950, RCM (C-Tick), EAC (GOST-R), RoHS, REACH, KC, CCC



## Product Specifications

Part Number to Order	PFXPEBBD42DNN1	PFXPEBBD42CNN1	PFXPEBBD21BNN1	PFXPEBBD40NNN1
<b>Operating System</b>	Windows® Embedded Standard 7 (32bit)	Windows® Embedded Standard 7 (32bit)	Windows® Embedded Standard 2009 (32bit)	None
<b>Storage</b>	SSD 80GB	CFast Card 16GB	CFast card 8GB	None
<b>Expansion Slot</b>	Mini PCIe (full size) x 1	Mini PCIe (full size) x 1	Mini PCIe (full size) x 1	Mini PCIe (full size) x 1
<b>RAM</b>	4 GB (DDR3 800 MHz)	4 GB (DDR3 800 MHz)	2 GB (DDR3 800 MHz)	4 GB (DDR3 800 MHz)
<b>Serial Port</b>	RS-232C x2, RS-232/422/485 x4	RS-232C x2, RS-232/422/485 x4	RS-232C x2, RS-232/422/485 x4	RS-232C x2, RS-232/422/485 x4
<b>Ethernet</b>	x3	x3	x3	x3
<b>USB</b>	TypeA (USB2.0) x5	TypeA (USB2.0) x5	TypeA (USB2.0) x5	TypeA (USB2.0) x5
<b>Digital I/O</b>	8 bits (selectable I/O)	8 bits (selectable I/O)	8 bits (selectable I/O)	8 bits (selectable I/O)
<b>Video Interface</b>	Analog RGB x1, HDMI x1	Analog RGB x1, HDMI x1	Analog RGB x1, HDMI x1	Analog RGB x1, HDMI x1
<b>Sound Interface</b>	Line-in, Line-out, Mic-in	Line-in, Line-out, Mic-in	Line-in, Line-out, Mic-in	Line-in, Line-out, Mic-in

## Atom N270 – PE4000B

## Fanless Industrial PC

## General Specifications

<b>Models</b>	PE4000B
<b>CPU</b>	Intel Atom N270 1.6 GHz
<b>Rated Input Voltage</b>	9 to 36 Vdc $\pm$ 5 %
<b>Power Consumption</b>	15 W (Typically)
<b>External Dimensions</b>	254.8 x 58.7 x 149.2 mm (10.03 x 2.31 x 5.88 in.)
<b>Storage Temperature</b>	-40 to 85 °C (-40 to 185 °F)
<b>Ambient Operating Temp</b>	w/ air flow: 0 to 70 °C (32 to 158 °F) w/o airflow: 0 to 60 °C (32 to 140°F)
<b>Environmental Ratings</b>	IP40
<b>Certifications</b>	CE, UL UL60950, RCM (C-Tick), EAC (GOST-R), RoHS, REACH, KC, CCC



## Product Specifications

Part Number to Order	PFXPEBAD21ANN1	PFXPEBAD20NNN1
<b>Operating System</b>	Windows® Embedded Standard 2009 (32bit)	None
<b>Storage</b>	CF Card 8GB	None
<b>Expansion Slot</b>	Mini PCIe (half size) x 1	Mini PCIe (half size) x 1
<b>RAM</b>	2 GB (DDR2 533 MHz)	2 GB (DDR2 533 MHz)
<b>Serial Port</b>	RS-232C x2	RS-232C x2
<b>Ethernet</b>	x1	x1
<b>USB</b>	TypeA (USB2.0) x2	TypeA (USB2.0) x2
<b>Digital I/O</b>	n/a	n/a
<b>Video Interface</b>	Analog RGB x 1	Analog RGB x 1
<b>Sound Interface</b>	n/a	n/a

## RC6700 Rugged Panel PC

The RC6700 Rugged Panel PC 15" is constructed with completely sealed stainless steel type 4/4X, IP 65/66, NEMA 4/4X enclosure with environmental ratings on the entire system. It supports a wide operating temperature, comes with pre-installed Windows Embedded operating system; and is powered by high-performance and low power consumption Intel® Atom™ processor N2600 1.6 GHz in fanless industrial-grade high-bright LCD flat touch screen panel. It offers Class 1 Div 2, Groups A, B, C, D, CENELEC's ATEX 94/9/EC Zone 2, IEC's IECEx Zone 2, Ex nA, and Ex ic certification which are primarily designed for the volatile and harsh environments of Oil, Gas, and oilfield equipment & services.



### General Specifications

<b>Part Number to Order</b>	<b>HAR15PFA03-48018-R01</b>
<b>Display Type and Size</b>	15" diagonal, Active matrix TFT LCD (4:3)
<b>Operating System</b>	Windows® Embedded Standard 7 E
<b>Graphic Display Resolution</b>	1,024 x 768 pixels (XGA)
<b>Processor</b>	Intel® Atom Processor N2600 1.6 GHz
<b>System Memory</b>	4GB DDR3 1333 MHz, up to 4GB
<b>Storage</b>	32GB mSATA Solid State Drive
<b>Touch Panel Type</b>	Analog resistive 5-wire
<b>Serial Port</b>	1x RS-232C (IP65 connector and cable)
<b>Ethernet</b>	1x RJ 45-10/100/1000 Mbps (IP65 connector and cable)
<b>USB</b>	2x USB2.0 (IP65 connector and cable)
<b>Operating Temperature</b>	-20 to 50 °C (-4 to 122 °F)
<b>Ingress Protection</b>	NEMA4 IP65 (360° protection)
<b>Humidity</b>	30 to 90% RH (non-condensing)
<b>Operating Shock Protection</b>	15G, 11ms duration
<b>Operating Vibration Protection</b>	5 Hz ~ 500 Hz/ 1 Grms/ 3 Axis
<b>Packing Vibration Protection</b>	5 Hz ~ 500 Hz/ 2.16 Grms/ 3 Axis
<b>Rated Input Voltage</b>	12Vdc, 9v~36vdc
<b>Power Consumption</b>	25W (typ.) (max. backlight & high CPU loading)
<b>Dimensions</b>	W396 x H310 x D49 mm

## PS5000 Series Industrial PC

### Description

The PS5000 Series is the newest line up in the Pro-face Industrial PC family, offering high connectivity, reliability, and design. Our built-to-order lineup allows customers to choose the product that best suits their purposes.

On the iPC offer, we will introduce new Node Box PCs with Intel Core i7, and Celeron CPUs which can be used in a modular & flexible Panel PC configuration with 15", 19" or 22" display screens.



### Features

**Modular:** Combine the Box type and the Display in a range of sizes from 15 to the ultra-large 22 inches. Flexibly change the functions and sizes.

**Slim:** Panel-integrated type - drastically slimmer profile with less wasted space and high performance retained featuring optimized design for equipment that requires space-saving.

Featuring an optimized industrial design for a 66% cut in the required depth. No fan means a smaller operation panel with no need to worry about exhaust heat, resulting in less cost to you.

**Box:** Stationary box type suitable for an environment and equipment that does not require operation and display. Both landscape and portrait placement available. Using Pro-face Remote HMI makes monitoring possible only when needed.

**Powerful:** A generous helping of the latest technology amounts to a surprising edge in performance. This means more power for equipment requiring high-speed equipment with different usability via HMI and PC.

**Smart:** Intuitive gestures for zooming and switching screens similar to popular tablets and smartphones for even smoother operation. Scroll, swipe, pinch, two-point touch, etc.

**Built to order:** Choose a configuration that best suits your budget and purpose. Configuration requirements can be selected online, eliminating the need to look through models to find the best match.

**Remote solutions:** Includes a proprietary tablet /smartphone app designed for use in industrial settings. The app offers a revolutionary debugging and remote monitoring experience.

## PS5000 Slim Panel PC

The PS5000 Series is the newest line up in the Pro-face Industrial PC family. The three display sizes, 10", 15" and 19" offer a slim design, and low reactivity glass that creates less glare and higher contrast. This powerful IPC features a Core™ i3-4010U or Atom E3827 1.7 GHz processor, creating a powerful system for any production floor. Its aluminum housing adds to the PC's durability, while its multiple I/O ports lend to its flexibility. These units provide more robust storage options, as well as a bright and crisp TFT color display.


[Configure PS5000 Core i3](#)
[Find Distributor](#)
[Configure PS5000 Atom](#)

### General Specifications

Models	PS5501W	PS5701W	PS5711W
<b>Display Type and Size</b>	10.1" Color LCD	15.6" (wide 16:9) Color LCD	15.6" (wide 16:9) Color LCD
<b>CPU</b>	Atom E3827, 1.75 GHz	Atom E3827, 1.75 GHz	Core i3-4010U 1.7GHz
<b>Operating System</b>	Windows® 7 Ultimate (64 bit) MUI, Windows® Embedded Standard 7 Premium (64 bit) MUI, Windows® Embedded 8.1 Industry (64 bit) MUI		
<b>Graphic Display Resolution</b>	1,280 x 800 pixels WXGA TFT	1,366 x 768 pixels FWXGA TFT	1,366 x 768 pixels FWXGA TFT
<b>Touch Panel Type</b>	Multi-touch (5 point simultaneous touch) projected capacitive		
<b>Serial Port (COM)</b>	RS-232C x1, RS-232C / 422 / 485 (D-Sub 9-pin plug) x1		
<b>Ethernet</b>	10/100/1000 Mbit/s (RJ-45 Modular Jack) x2		
<b>USB</b>	USB 3.0 x1, USB 2.0 x1 (Type A)	USB 3.0 x1, USB 2.0 x1 (Type A)	USB 3.0 x2 (Type A)
<b>Backlight</b>	LED		
<b>Storage Temperature</b>	- 20 to 60° C [- 4 to 140° F]		
<b>Surrounding Air Temperature</b>	When using SSD / CFast running: 0 to 55° C [32 to 131° F] When using HDD running: 0 to 45° C [32 to 113° F]		
<b>Environmental Ratings</b>	IP66 Front Panel		
<b>Rated Input Voltage</b>	DC Power Model: 24 Vdc ±20 % When using AC power supply unit: 100 to 240 Vac *1		
<b>Power Consumption</b>	12 W (max 24 W)	18 W (max 60 W)	18 W (max 60 W)
<b>External Dimensions</b>	W283.1 x H202.3 x D61.3 mm [W11.15 x H7.96 x D2.41 in.]	W419.7 x H269.0 x D61.9 mm [W16.52 x H10.59 x D2.44 in.]	W419.7 x H269.0 x D56.7 mm [W16.52 x H10.59 x D2.23 in.]
<b>Panel Cutout Dimensions</b>	W274.6 x H193.8 mm [W10.81 x H7.63 in.]	W412.4 x H261.7 mm [W16.24 x H10.30 in.]	W412.4 x H261.7 mm [W16.24 x H10.30 in.]

# PS5000 Slim Panel PC



PS-5811W 19"



PS-5821W 19" - Enclosed

## General Specifications

Models	PS5811W	PS5821W
Display Type and Size	18.5" (wide 16:9) Color LCD	18.5" (wide 16:9) Color LCD Enclosed
CPU	Core i3-4010U 1.7GHz	Core i3-4010U 1.7GHz
Operating System	Windows® 7 Ultimate (64 bit) MUI, Windows® Embedded Standard 7 Premium (64 bit) MUI, Windows® Embedded 8.1 Industry (64 bit) MUI	
Graphic Display Resolution	1,366 x 768 pixels FWXGA TFT	
Touch Panel Type	Multi-touch (5 point simultaneous touch) projected capacitive	
Serial Port (COM)	RS-232C x1, RS-232C / 422 / 485 (D-Sub 9-pin plug) x1	RS-232C (M12 A-coding, 8-pin plug) x1
Ethernet	10/100/1000 Mbit/s (RJ-45 Modular Jack) x2	10/100/1000 Mbit/s (M12 A-coding, 8-pin socket) x2
USB	USB 3.0 x1, USB 2.0 x1 (Type A)	USB 2.0 x1 (M12 A-coding, 8-pin socket)
Backlight	LED	
Storage Temperature	- 20 to 60 °C (- 4 to 140 °F)	
Surrounding Air Temperature	When using SSD / CFast running: 0 to 55°C [32 to 131°F] When using HDD running: 0 to 45°C [32 to 113°F]	
Environmental Ratings	IP66 Front Panel	IP66 All Around
Rated Input Voltage	DC Power Model: 24 Vdc ±20 % When using AC power supply unit: 100 to 240 Vac	DC Power Model: 24 Vdc ±20 % (M12 A-coding, 8-pin female)
Power Consumption	28 W (max 60 W)	35 W (max 60 W)
External Dimensions	W488.0 x H309.6 x D56.7 mm [W19.21 x H12.17 x D2.23 in.]	W488.0 x H309.6 x D65 mm [W19.21 x H12.17 x D2.56 in.]
Panel Cutout Dimensions	W479.3 x H300.3 mm [W18.87 x H11.82 in.]	n/a



## PS5000 Modular Display + Box PC

PS5000 Series is the highest performance industrial PC, offering high connectivity, reliability, and design. Our built-to-order lineup allows customers to choose the product that best suits their purposes with new Node Box PCs with Intel Core i7, and Celeron CPUs which can be used in a modular & flexible Panel PC configuration with 15", 19" or 22" display screens—flexibly change the functions and sizes.

Also available as a stand-alone, the stationary box type is suitable for an environment and equipment that does not need operation and display. Both landscape and portrait mounting available.


[Configure PS5000 Modular](#)
[Find Distributor](#)


### General Specifications

Models	PS5000B	
<b>CPU</b>	Celeron 2980U 1.6 GHz	Core i7-4650U 1.7 GHz
<b>Main Memory</b>	4 GB or 8 GB, DDR3L 1600 MHz, SO-DIM SDRAM	8 GB or 16 GB, DDR3L 1600 MHz, SO-DIM SDRAM
<b>Operating System</b>	Windows® 7 Ultimate (64 bit) MUI, Windows® Embedded Standard 7 Premium (64 bit) MUI, Windows® Embedded 8.1 Industry (64 bit) MUI	
<b>Serial ATA</b>	HDD or SSD x2, CFAST x1, mSATA x1	
<b>Serial Port (COM)</b>	RS-232C / 422 / 485 (D-Sub 9-pin plug) x1	
<b>Ethernet</b>	10/100/1000 Mbit/s (RJ-45 Modular Jack) x2	
<b>USB</b>	USB 3.0 x2, USB 2.0 x2 (Type A)	
<b>Storage Temperature</b>	- 20 to 60 °C (- 4 to 140 °F)	
<b>Surrounding Air Temperature</b>	When using SSD / CFAST running: 0 to 55°C [32 to 131°F] When using HDD running: 0 to 45°C [32 to 113°F]	
<b>Environmental Ratings</b>	IP66 Front Panel	
<b>Rated Input Voltage</b>	DC Power Model: 24 Vdc ±20 % When using AC power supply unit: 100 to 240 Vac	
<b>Power Consumption</b>	15" single touch box: 17.8W typical, 33.6 W max	15" single touch box: 18.1 W typical, 38.4 max
<b>External Dimensions</b>	W283.1 x H202.3 x D61.3 mm [W11.15 x H7.96 x D2.41 in.]	W419.7 x H269.0 x D61.9 mm [W16.52 x H10.59 x D2.44 in.]

# PS5000 Modular Display + Box PC



## General Specifications

Models	PS5700T	PS5700W	PS5800W	PS5900W
<b>Display Type and Size</b>	15" Color LCD	15.6" (wide 16:9) Color LCD	18.5" (wide 16:9) Color LCD	21.5" (wide 16:9) Color LCD
<b>CPU</b>	Celeron 2980U 1.6GHz Core i7-4650U 1.7 GHz			
<b>Main Memory</b>	8 GB or 16 GB, DDR3L 1600 MHz, SO-DIM SDRAM (Core i7) 4 GB or 8 GB, DDR3L 1600 MHz, SO-DIM SDRAM (Celeron)			
<b>Operating System</b>	Windows® 7 Ultimate (64 bit) MUI, Windows® Embedded Standard 7 Premium (64 bit) MUI, Windows® Embedded 8.1 Industry (64 bit) MUI			
<b>Graphic Display Resolution</b>	1,024 x 768 px XGA TFT	1,366 x 768 px FWXGA TFT	1,366 x 768 px FWXGA TFT	1,980 x 1,080 px Full HD TFT
<b>Touch Panel Type</b>	Resistive single touch	Multi-touch (5 point simultaneous touch) projected capacitive		
<b>Serial Port (COM)</b>	RS-232C / 422 / 485 (D-Sub 9-pin plug) x1			
<b>Ethernet</b>	10/100/1000 Mbit/s (RJ-45 Modular Jack) x2			
<b>USB</b>	3.0 x2, 2.0 x2, 2.0 x1 (front) (Type A)	3.0 x2, 2.0 x2 (Type A)	3.0 x2, 2.0 x2 (Type A)	3.0 x2, 2.0 x2 (Type A)
<b>Backlight</b>	LED Lifespan > 50,000 h @ 25° C [77° F]			
<b>Storage Temperature</b>	- 30 to 70° C [- 22 to 158° F]			
<b>Surrounding Air Temperature</b>	When using SSD / CFast running: 0 to 55° C [32 to 131° F], When using PCI/PCIe: 0 to 45° C [32 to 113° F] When using HDD running: 0 to 45° C [32 to 113° F], When using 2x mPCI + Display module: 0 to 45° C [32 to 113° F]			
<b>Environmental Ratings</b>	IP66 Front Panel / Class 1 Div 2			
<b>Rated Input Voltage</b>	DC Power Model: 24 Vdc ±20 % When using AC power supply unit: 100 to 240 Vac			
<b>Power Consumption</b>	Core i7 25.9 W (max 44.9 W) Celeron 25.5 W (max 39.9 W)	27.1 W (max 46.1 W) 26.6 W (max 40.9 W)	28.4 W (max 48.1 W) 27.9 W (max 43.1 W)	30.5 W (max 50.7 W) 29.9 W (max 45.2 W)
<b>External Dimensions</b>	0 Slot W390.7 x H290.0 x D93.2 mm [W15.38 x H11.42 x D3.67 in.] 2 Slot W390.7 x H290.0 x D131.2 mm [W15.38 x H11.42 x D5.16 in.]	W419.7 x H269.0 x D93.2 mm [W16.52 x H10.59 x D3.67 in.] W419.7 x H269.0 x D131.2 mm [W16.52 x H10.59 x D5.16 in.]	W488.3 x H309.0 x D93.2 mm [W19.21 x H12.17 x D3.67 in.] W488.0 x H309.6 x D131.2 mm [W19.21 x H12.17 x D5.16 in.]	W558.4 x H349.8 x D93.2 mm [W21.98 x H13.77 x D3.67 in.] W558.4 x H349.8 x D131.2 mm [W21.98 x H13.77 x D5.16 in.]
<b>Panel Cutout Dimensions</b>	W383.5 x H282.5 mm [W15.09 x H11.12 in.]	W412.4 x H261.7 mm [W16.24 x H10.30 in.]	W479.3 x H300.3 mm [W18.87 x H11.82 in.]	W550.3 x H341.8 mm [W21.66 x H13.45 in.]

## PS4600 Panel PC

The PS4600 features an Core™ i3 or Celeron 827 processor, creating a powerful system for any production floor. Its aluminum housing adds to the PC's durability, while its multiple I/O ports lend to its flexibility. These units provide more robust storage options, along with quick and easy storage expansion. The bright and crisp TFT color display is also complemented with different screen size options.



### General Specifications

<b>Models</b>	PS4600 (Build to Order)
<b>Operating System</b>	Windows® XP Professional SP3 (32bit), Windows® 7 Ultimate (32 or 64bit), Windows® Embedded Standard 2009 (32bit), Windows® Embedded Standard 7 Premium (32bit)
<b>Display Type and Size</b>	TFT Color LCD 12.1"
<b>Graphic Display Resolution</b>	1,024 x 768 pixels (XGA)
<b>Touch Panel Type</b>	Analog resistive film
<b>Serial Port (COM)</b>	RS-232C x2
<b>Ethernet Interface</b>	x2
<b>USB</b>	TypeA (USB2.0) x5
<b>Backlight</b>	LED
<b>Storage Temperature</b>	-20 to 60 °C (-4 to 140 °F)
<b>Ambient Operating Temp</b>	Operating temperature dependant on unit model. See PS4600 manual for exact temperature.
<b>Environmental Ratings</b>	IP65, Type 4X (Indoor use only), Class 1 Div 2
<b>Rated Input Voltage</b>	24Vdc or 100 to 240 Vac
<b>Power Consumption</b>	130 W (max.)
<b>External Dimensions</b>	Dimensions dependant on unit model. See PS4000 Manual for exact dimensions.
<b>Panel Cutout Dimentions</b>	W301.5 x H227.5 mm (W11.87 x H8.96 in.)



# PS4600 Panel PC

## Product Options

[Configure PS4600](#)
[Find Distributor](#)

<b>Front Bezel</b>	Aluminum No Bezel (Rear Mount)
<b>Expansion Slot</b>	0 slot 1 slot = 1 PCI 1 slot = 1 PCIe 2 slots = 1 PCI + 1 PCIe 2 slots = 2 PCI
<b>CPU Type</b>	Celeron 827E Core i3 3217UE
<b>Power Supply</b>	AC AC with I/F for UPS battery unit DC DC with I/F for UPS battery unit
<b>RAM</b>	1GB 2GB 3GB (2GB+1GB) 4GB (4GB) 6GB (4GB+2GB) 8GB (4GB+4GB) 12GB (8GB+4GB) 16GB (8GB+8GB)
<b>OS</b>	None Windows Embedded Standard 2009 Windows Embedded Standard 7 (32bit) Windows 7 Ultimate (32bit) Windows 7 Ultimate (64bit)
<b>Storage Device</b>	None CFast 4GB CFast 8GB CFast 16GB CFast 4GB + CFast 4GB CFast 8GB + CFast 4GB SSD 60GB SSD 80GB SHD 500GB
<b>Slide-in Slot</b>	None DVD multi drive SSD 60GB SSD 80GB SHD 500GB
<b>Options</b>	None COM Expansion Board RS-232C/422/485 COM Expansion Board RS-232C/422/485 + COM Expansion Board RS-232C/422/485

## FP5000 – Flat Panel Display



### Description

Sharing the panel cut out dimension with the FP3000 Series, the FP5000 Series is the natural choice for upgrading your system. Automatic resolution and brightness adjustment eases upgrade and increase operation efficiency.

The FP5000 Series employs an analog resistive multi-touch touch panel that allows multi touch gestures even when wearing work gloves. Gesture operation greatly prevents unintended operation and the multi-touch panel film prevents display glass fragments from contaminating the processed goods, essential in the food and beverage industry.

In addition to cutting-edge functions such as gesture operation and a brightness sensor, the FP5000 Series provides a high level of environmental resistance with features like a maximum ambient operating temperature rating of 60°C and an IP67F protection rating that allows it to withstand washing with a high-pressure cleaner during hygienic maintenance of equipment.

### Features

- Automatic resolution adjustment
- Supports operating systems from Windows XP to Windows 8.1
- 12Vdc battery operated devices and equipment
- Straight forward connectivity
- Front USB port for easy data export

Simple configuration of display and PC

- Easy installation with integrated mounting bracket and anti-drop lock
- Class 1 Div 2 Haz Loc Certification

# FP5000 – Flat Panel Display

Touch Screen DVI I/F Compatible  
Industrial Flat Panel Monitors

## General Specifications

<b>Backlight</b>	White LED
<b>Storage Temperature</b>	-20 to 60 °C (-4 to 140 °F)
<b>Ambient Operating Temp</b>	0 to 60 °C (32 to 140 °F)
<b>Environmental Ratings</b>	w/ factory-installed front USB cover: IP65F, IP67F, TYPE 1, w/ front USB cover as an option: IP66F, IP67F TYPE 1, TYPE 4X/13
<b>Certifications</b>	CE, UL Listed, RoHS, Class 1 Div 2



## Product Specifications

Part Number to Order	<b>PFXFP5600TPD</b>	<b>PFXFP5700TPD</b>
<b>Display Type and Size</b>	12.1" TFT Color LCD	15" TFT Color LCD
<b>Display Colors</b>	16 million colors	16 million colors
<b>Graphic Display Resolution</b>	1,024 x 768 pixels (XGA)	1,024 x 768 pixels (XGA)
<b>Display Area</b>	W245.76 x H184.32 mm (W9.68 x H7.26 in.)	W304.1 x H228.1 mm (W11.97 x H8.98 in.)
<b>Touch Panel Type</b>	Resistive film (analog, multi-touch)	Resistive film (analog, multi-touch)
<b>Brightness Controls</b>	0 to 100	0 to 100
<b>USB (1)</b>	USB2.0 (TYPE-B)	USB2.0 (TYPE-B)
<b>USB (2)</b>	USB2.0 (TYPE-A)	USB2.0 (TYPE-A)
<b>Video Input Interface</b>	DVI-D 24 pin (socket)	DVI-D 24 pin (socket)
<b>Rated Input Voltage</b>	12 to 24Vdc	12 to 24Vdc
<b>Power Consumption</b>	17 W (max.)	21 W (max.)
<b>Panel Cutout Dimensions</b>	W301.5 x H227.5 mm (W11.87 x H8.96 in.)	W383.5 x H282.5 mm (W15.1 x H11.12 in.)
<b>External Dimensions</b>	W315 x H241 x D67 mm (W12.4 x H9.49 x D2.64 in.)	W397 x H296 x D67 mm (W15.6 x H11.7 x D2.64 in.)

## IPC Accessories

Cables, Modules, Adapters,  
Storage Media, Fasteners, Gaskets

PS4600

<b>CA7-DFS12-01</b>	Screen Protection Sheet for 12-inch (5 sheets/set)
<b>PFXZPSSCAD2</b>	Adaptor to install a CFast card to Slide in Disk for PS-4600
<b>PFXZCDSCCFA161</b>	CFast Card, 16GB for PS-4600
<b>PFXZCDSCCFA41</b>	CFast Card, 4GB for PS-4600
<b>PFXZCDSCCFA81</b>	CFast Card, 8GB for PS-4600
<b>PFXZPSSCHDD502</b>	HDD Unit without OS, 500GB for PS-4600 (for Slide in Disk)
<b>PFXZPSSCSSD122</b>	SSD Unit without OS, 128GB for PS-4600 (for Slide in Disk)
<b>PFXZPSSCSSD62</b>	SSD Unit without OS, 60GB for PS-4600 (for Slide in Disk)
<b>PFXZPSSSAD2</b>	Adaptor to install unit for Slide in Disk to Slide in Slot for PS-4600
<b>PFXZPSSSMD2</b>	DVD multi drive for PS-4600 (for Slide in Slot)
<b>PFXZPSD311</b>	SO-DIM module DDR3 1GB for PS-4600
<b>PFXZPSD321</b>	SO-DIM module DDR3 2GB for PS-4600
<b>PFXZPSD341</b>	SO-DIM module DDR3 4GB for PS-4600
<b>PFXZPSD381</b>	SO-DIM module DDR3 8GB for PS-4600
<b>PFXZPSEUPCI11</b>	1 slot Expansion Unit for PS-4600 (PCI x1 + Slide in Slot x1)
<b>PFXZPSEUPCI21</b>	2 slots Expansion Unit for PS-4600 (PCI x1 + PCIe x1 + Slide in Slot x1)
<b>PFXZPSEUPCIA1</b>	2 slots Expansion Unit for PS-4600 (PCI x2 + Slide in Slot x1)
<b>PFXZPSEUPCIC1</b>	1 slot Expansion Unit for PS-4600 (PCIe x1 + Slide in Slot x1)
<b>PFXZPSIUCMR42</b>	COM Expansion Board for PS-4600 (Add 1ch for RS-232C/422/485)
<b>PFXZPSIUSR2 SRAM</b>	2MB Expansion Board for PS-4600
<b>PFXZPSIUUPM2</b>	UPS Interface Board for PS-4600
<b>PFXZPPFTFAN2</b>	Replacement Fan filter for PS-4600 (5 pcs)

## IPC Accessories

Cables, Modules, Adapters,  
Storage Media, Fasteners, Gaskets

## PS4600

<b>PFXZPPIUFAN2</b>	Replacement Fan kit for PS-4600
<b>PFXZPPAF10P2</b>	Used to install PS-4600 into a solid panel (10 pcs)
<b>PFXZPSCNAC1</b>	AC power supply connector (Screw type 5pcs)
<b>PFXZPSCNAC2</b>	AC power supply connector (5 pcs)
<b>PFXZPSCBUP3</b>	UPS connection cable between UPS interface board and UPS battery unit for PS-4600 (3m)
<b>PFXZPSCBUP32</b>	UPS connection cable between UPS interface board and UPS battery unit for PS-4600 (3m)
<b>CA7-CBLCVDVI-D/RGB-01</b>	A branch cable converting DVI-I to DVI-D and RGB (15cm)
<b>CA5-USBEXT-01</b>	Extension cable for attaching to USB port on front panel (1m)
<b>CA7-CBLCVRGB-01</b>	A cable converting DVI-I to RGB (5m)
<b>FP-CV02-45</b>	Analog RGB interface cable used to send the image signal to the monitor from the host. (Dsub15-pin Plug) (4.5m)
<b>FP-DV01-50</b>	Digital Visual Interface cable used to send the image signal to the monitor from the host. (DVI-D 24-pin plug) (5m)
<b>FP-US00</b>	USB interface cable (5m) used for touch panel data transmission between the host and the FP
<b>FP61V-IS00-0</b>	Serial interface cable (5m) used for touch panel data transmission between the host and the FP
<b>PFXZPBCBDV101</b>	DVI 10m cable for PS4000 series (10m)

## FP5000

<b>PFXZCBCNDC2</b>	Right-angle connector to connect DC power supply cables (5 pcs/set) (FP5000)
<b>PFXZCDWG121</b>	Provides dust and moisture resistance when this product is installed into a solid panel (1 piece)
<b>PFXZCDWG151</b>	Provides dust and moisture resistance when this product is installed into a solid panel (1 piece)
<b>PFXZFP5000USCLB1</b>	Clamp to prevent disconnection of USB cable (USB/Type B, 1 port, 5 clamps/set)
<b>PFXZCDOP121</b>	Environmental resistant cover for 12-inch display (1 piece)
<b>PFXZCDOP151</b>	Environmental resistant cover for 15-inch display (1 piece)



## IPC Accessories

Cables, Modules, Adapters,  
Storage Media, Fasteners, Gaskets

## PE4000B

<b>PFXZPECF81</b>	CF Card 8GB
<b>PFXZPECFA162</b>	CFast Card 16GB
<b>PFXZPECFA82</b>	CFast Card 8GB
<b>PFXZPESSD161</b>	SSD unit 160GB
<b>PFXZPESSD81</b>	SSD unit 80GB
<b>PFXZPEAFDR1</b>	DIN rail Adaptor for PE-4000B Atom N270
<b>PFXZPEAFDR2</b>	DIN rail Adaptor for PE-4000B Atom N2600
<b>PFXZPECNHDDV1</b>	A connector converting HDMI to DVI
<b>PFXZPECNDC1</b>	DC power supply connector for N270 (5 pcs)
<b>PFXZPECNDC2</b>	DC power supply connector for N2600 (5 pcs)
<b>PFXZPECNDIO1</b>	DIO Connector (5pcs)

## PS5000 Slim Panel PCs

<b>PFXZPPDSP152</b>	Screen Protection Sheet for W15" (5 pcs)
<b>PFXZPPDSP192</b>	Screen Protection Sheet for W19" (5 pcs)
<b>PFXZPPDSP102</b>	Screen Protection Sheet for W10" (5 pcs)
<b>PFXZPPWG152</b>	Gasket for W15" (1 pcs)
<b>PFXZPPWG192</b>	Gasket for W19" (1 pcs)
<b>PFXZPPWG102</b>	Gasket for W10" (1 pcs)
<b>PFXZPBCNDC2</b>	DC Power Supply Connector (5 pcs)
<b>PFXZPPAF12P2</b>	Installation fastener
<b>PFXZPSPUAC3</b>	AC power supply unit for PS-5000 Slim Panel PC Core i3

## IPC Accessories

Cables, Modules, Adapters,  
Storage Media, Fasteners, Gaskets

## PS5000 Slim Panel PCs

**PFXZPSCNM122** M12 Connectors (for Power, COM, LAN x2, USB) for 19"W Enclosed**SPC-1840WP-MCKE** M12 Cable Set for 19"W Enclosed**PFXZPSPUAC2** AC Power module for Slim Panel Atom (with straight 3 cables)**PFXZPSADSSD2** HDD Adapter for Slim Panel PC Atom**PFXZPSADVS102** VESA mounting kit for Slim Panel W10" Atom**PFXZPSADVS152** VESA mounting kit for Slim Panel W15" Atom

## PS5000 Modular PCs

**CA3-DFS15-01** Screen Protection Sheet for 15" (4:3) (5 pcs)**PFXZPPDSP152** Screen Protection Sheet for W15" (5 pcs)**PFXZPPDSP192** Screen Protection Sheet for W19" (5 pcs)**PFXZPPDSP222** Screen Protection Sheet for W22" (5 pcs)**PFXZPPWG153** Gasket for W15" (4:3) (1 pcs)**PFXZPPWG152** Gasket for W15" (1 pcs)**PFXZPPWG192** Gasket for W19" (1 pcs)**PFXZPPWG222** Gasket for W22" (1 pcs)**PFXZPBADHDD2** Adapter for HDD/SSD for Modular BOX**PFXZPBADVS02** VESA mounting kit for Modular Panel PC 0 slot**PFXZPBADVS22** VESA mounting kit for Modular Panel PC 2 slots**PFXZPBIUFAN2** FAN kit for Modular BOX**PFXZPBFTFAN2** FAN filter (5 pcs)**PFXZPBPAC2** AC Power module for Modular BOX (with straight 3 cables)

# IPC Accessories

Cables, Modules, Adapters,  
Storage Media, Fasteners, Gaskets

## PS5000 Modular PCs

**PFXZPBCNDC2** DC Power Supply Connector (5 pcs)

---

**PFXZPPAF12P2** Installation fastener for Displays

---

**PFXZPBADCVDPDV2** DP-DVI converter

---

**PFXZPBCBDPDV32** DP-DVI cable 3m

---

**PFXZPBEUUPB2** UPS Battery

---

**PFXZPBCBUP32** UPS 3m cable (PW & COM)

---